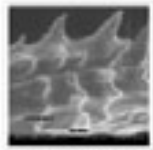


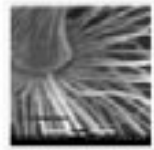
Electron Microscopy Images (May11-12, 2009)



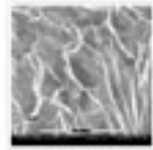
HM403.TIF



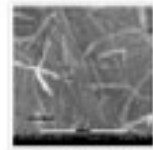
ALLISON.TIF



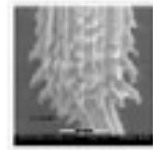
ALLISON2.TIF



ASHER1.TIF



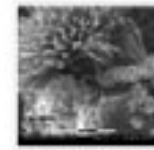
ASHER2.TIF



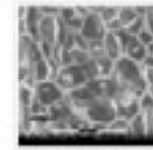
CAIT1.TIF



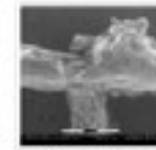
CAIT2.TIF



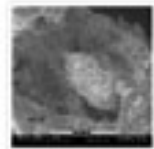
CARELLA1.TIF



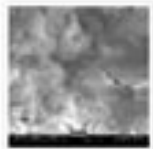
CARELLA2.TIF



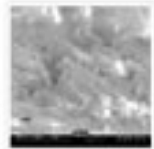
CARLYN.TIF



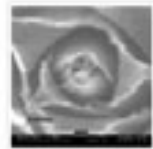
CARLYN2.TIF



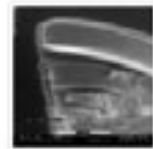
CHAN1.TIF



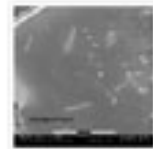
CHAN2.TIF



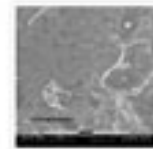
DIANA1.TIF



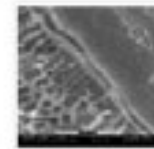
DIANA2.TIF



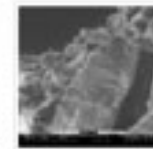
EVELYN1.TIF



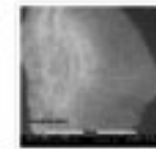
EVELYN2.TIF



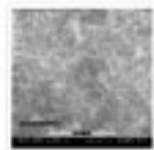
FLO1.TIF



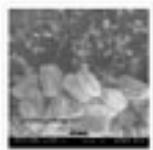
FLO2.TIF



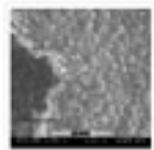
HARI6K.TIF



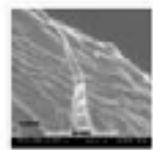
HARI225K.TIF



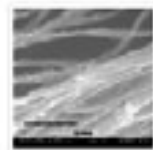
HELEN1.TIF



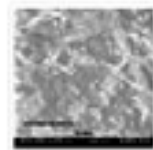
HELEN2.TIF



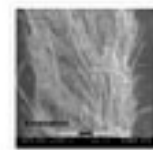
HM403.TIF



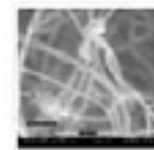
JEAN1.TIF



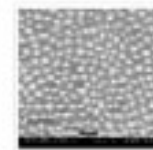
JEAN2.TIF



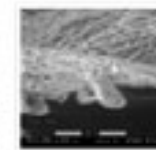
JEFF1.TIF



JEFF2.TIF



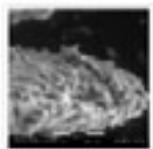
JESSIE1.TIF



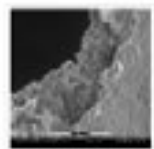
JESSIE2.TIF



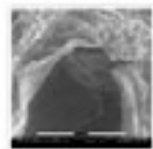
JOHN403.TIF



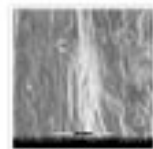
JON1.TIF



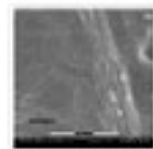
JON2.TIF



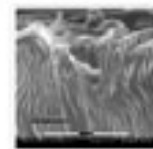
KRIS1.TIF



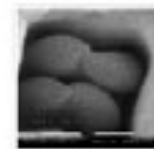
KRIS2.TIF



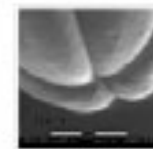
KRISSELL.TIF



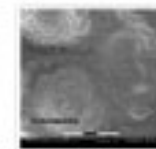
KRISSEL2.TIF



KRISTY1.TIF



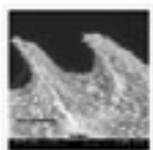
KRISTY2.TIF



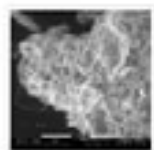
LAUREN.TIF



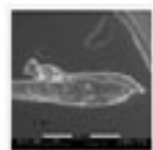
LAUREN2.TIF



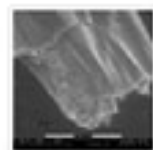
MELISSA1.TIF



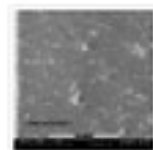
MELISSA2.TIF



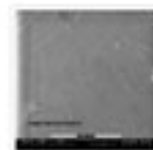
MTHEO1.TIF



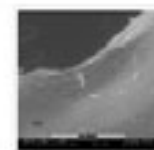
MTHEO2.TIF



NICOLEB.TIF



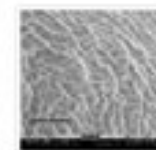
NICOLEBN.TIF



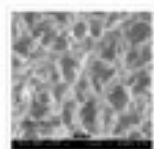
NV1.TIF



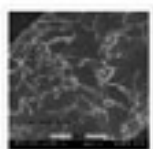
NV2.TIF



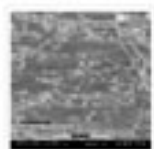
STEPHAN2.TIF



STEPHANI.TIF



WARDA.TIF

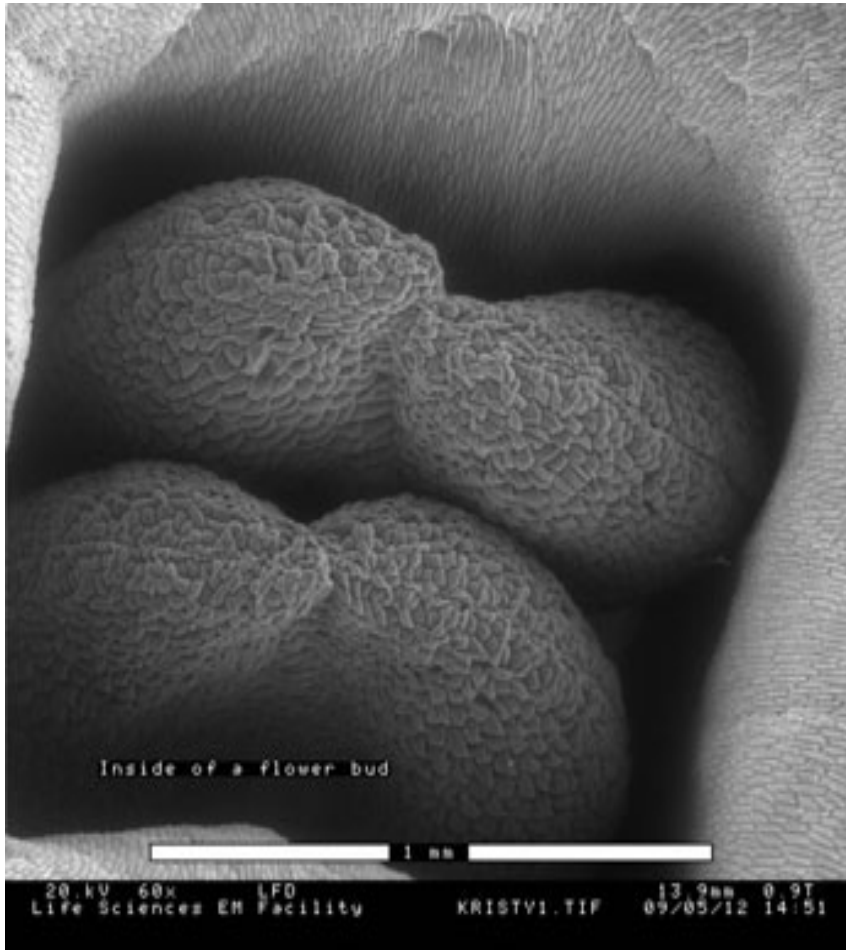


WARDAH.TIF

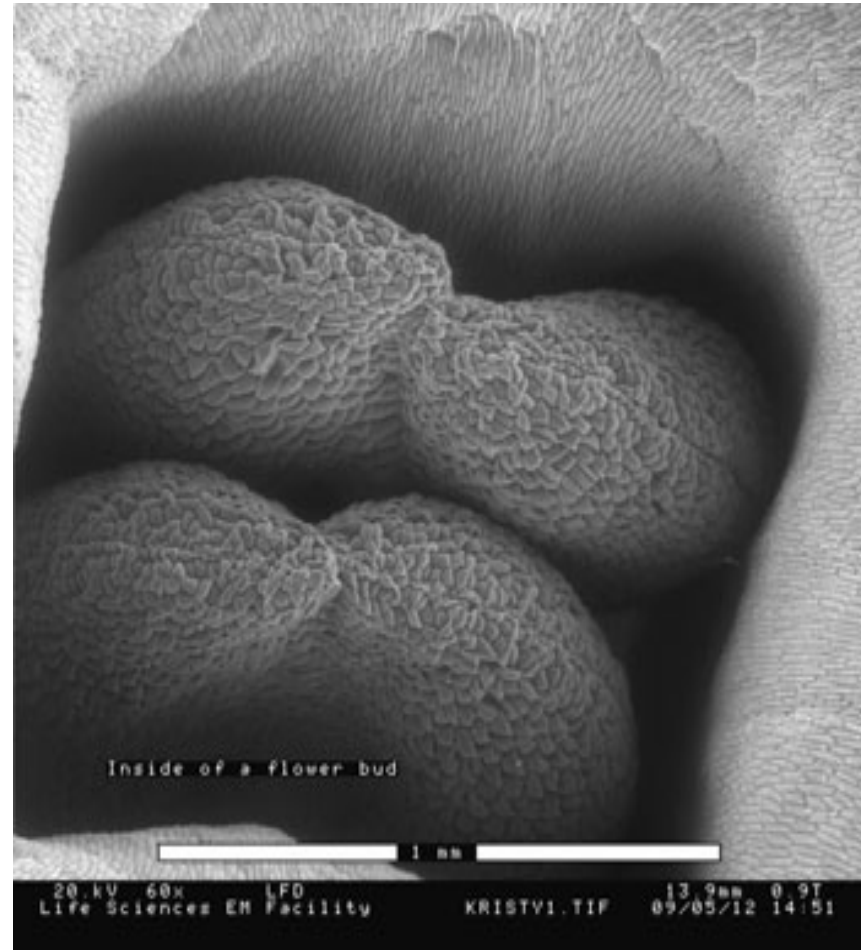
Scanning Electron Microscopy Images taken by Bio4XX3 students under the supervision of Klaus Schultes, Department of Biology, McMaster University. (Contrast, brightness and gamma in modified images were adjusted using Irfanview ver 4.23.)

Kristy

Inside a flower bud



Original

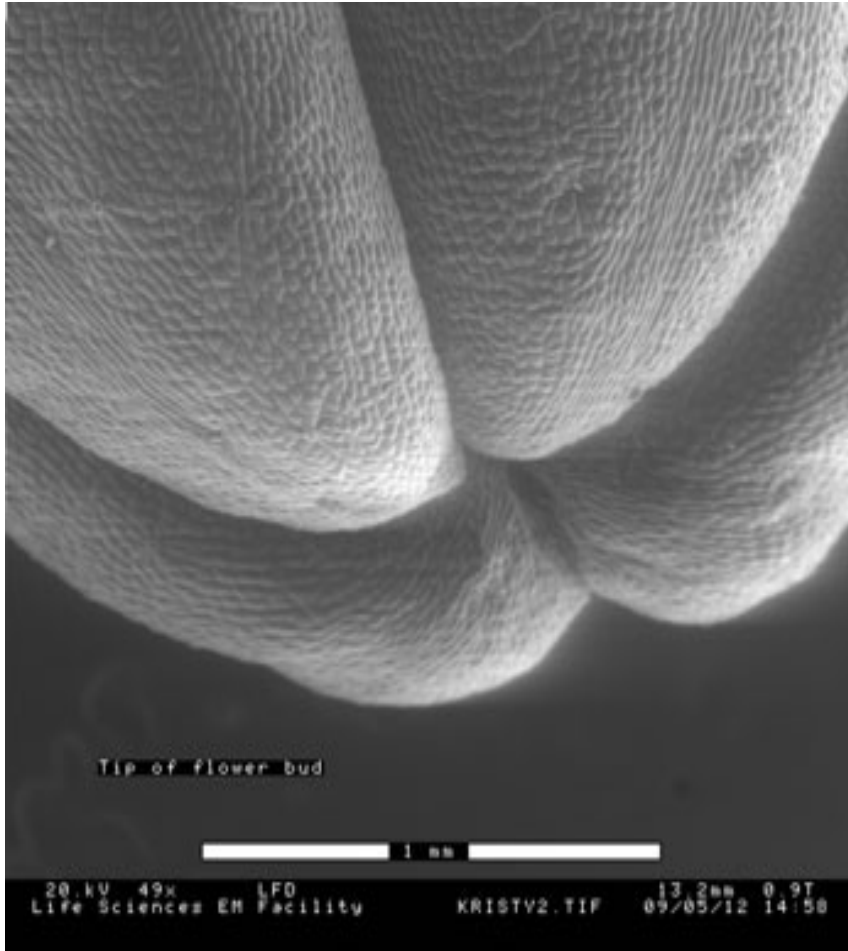


Modified

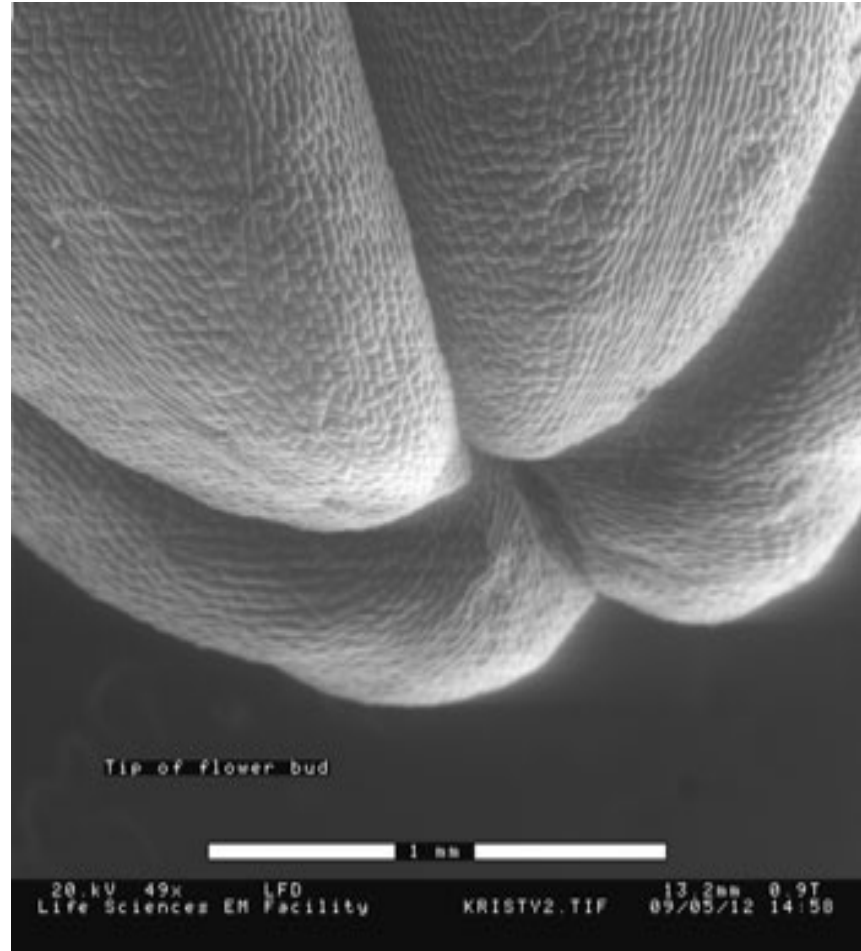
Scanning Electron Microscopy Images taken by Bio4XX3 students under the supervision of Klaus Schultes, Department of Biology, McMaster University. (Contrast, brightness and gamma in modified images were adjusted using Irfanview ver 4.23.)

Kristy

Tip of a flower bud



Original



Modified

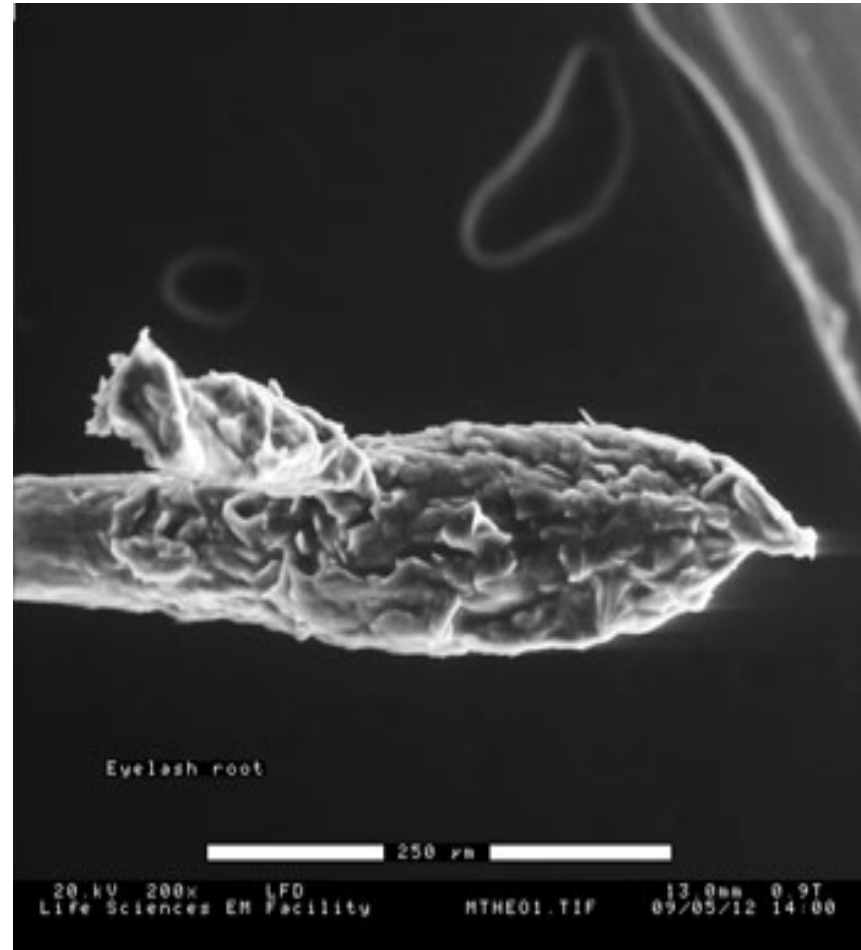
Scanning Electron Microscopy Images taken by Bio4XX3 students under the supervision of Klaus Schultes, Department of Biology, McMaster University. (Contrast, brightness and gamma in modified images were adjusted using Irfanview ver 4.23.)

Marianna

Eyelash Root



Original

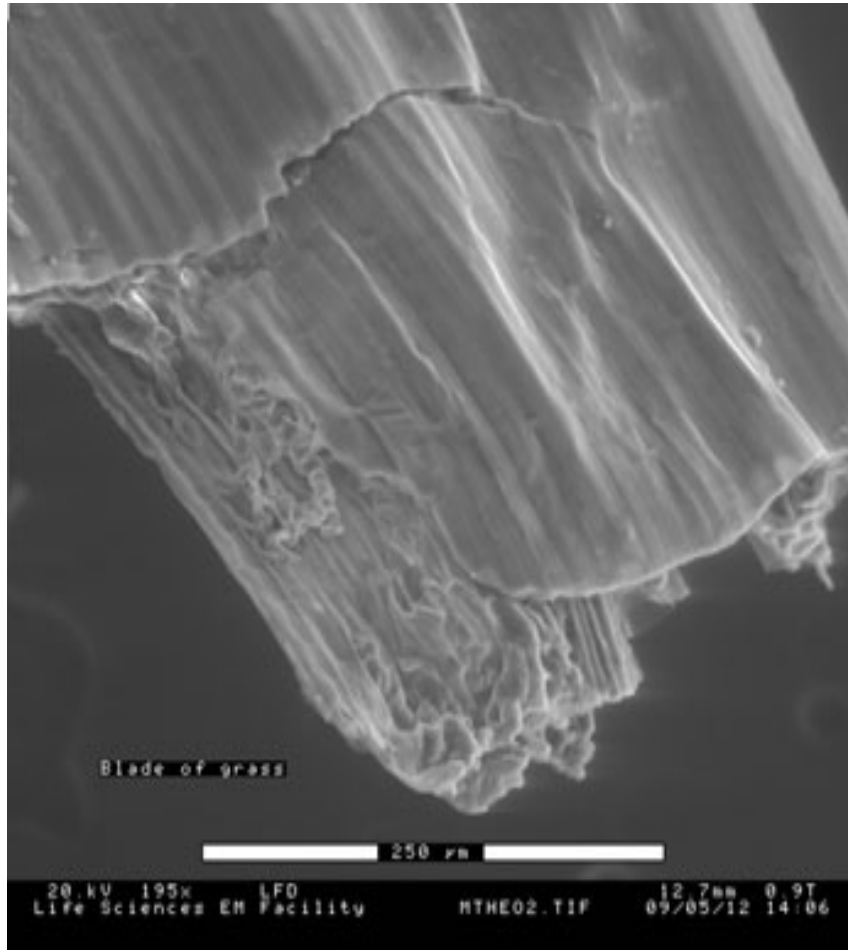


Modified

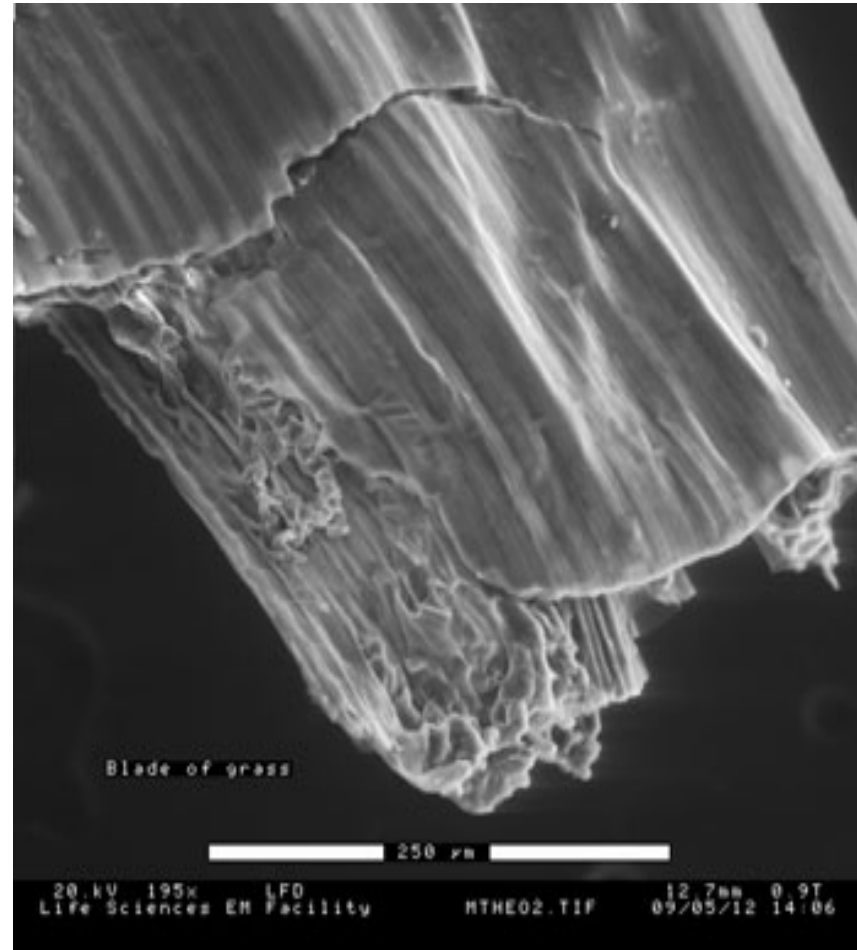
Scanning Electron Microscopy Images taken by Bio4XX3 students under the supervision of Klaus Schultes, Department of Biology, McMaster University. (Contrast, brightness and gamma in modified images were adjusted using Irfanview ver 4.23.)

Marianna

Blade of grass edge



Original

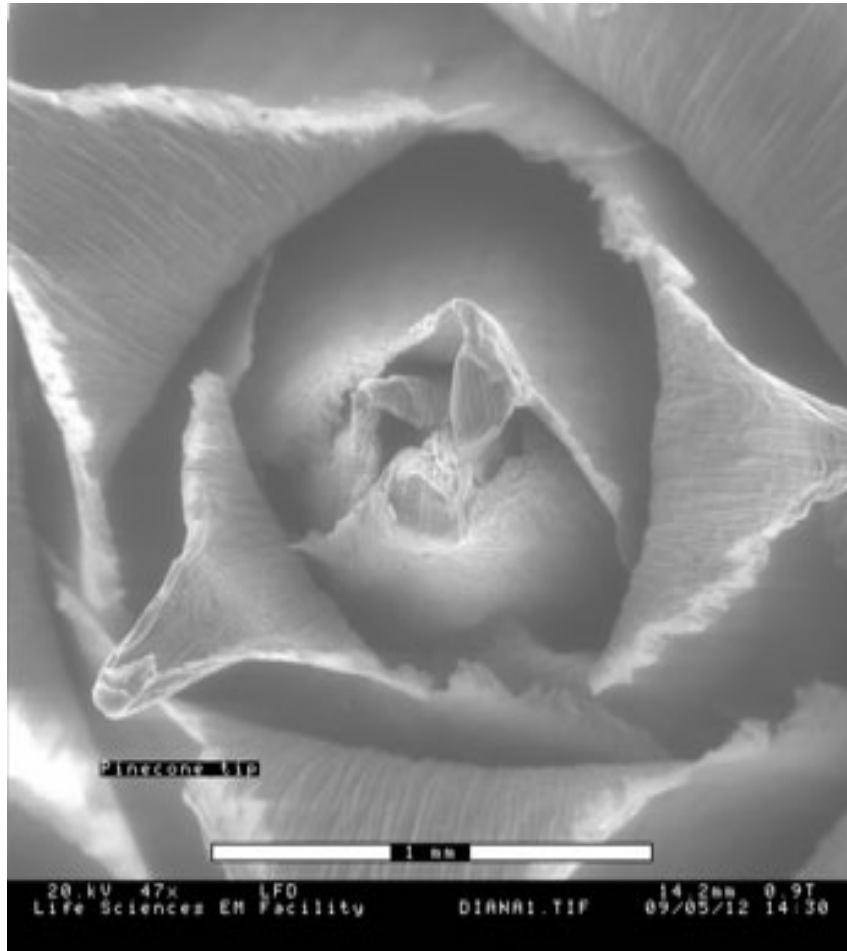


Modified

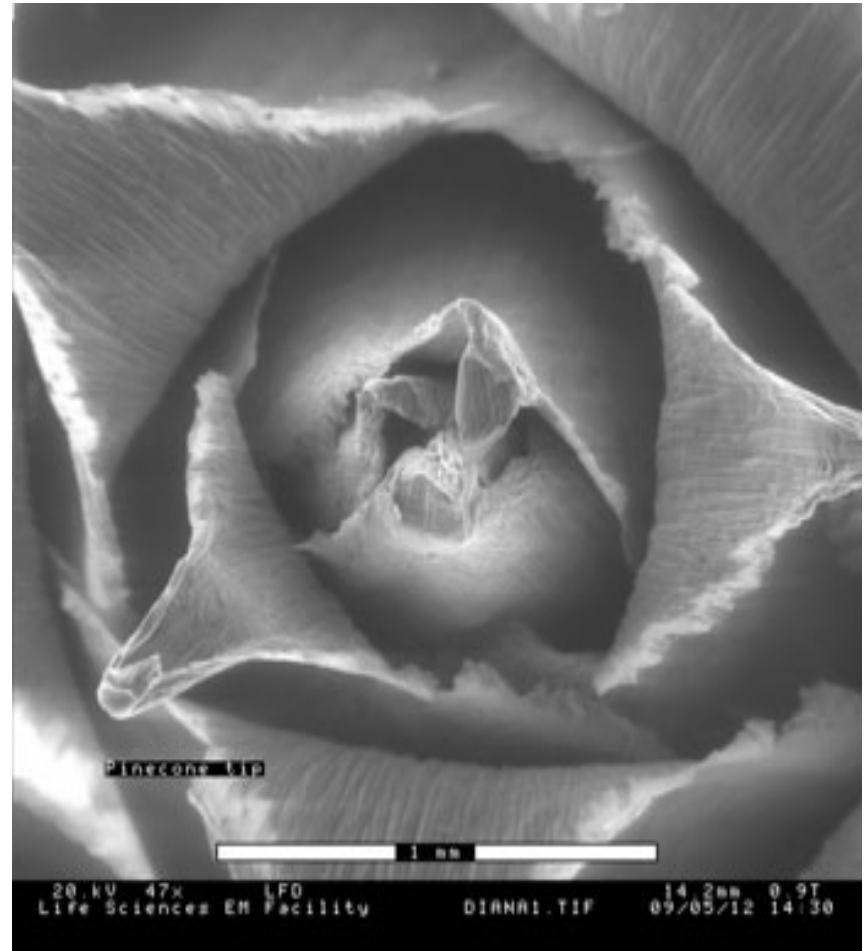
Scanning Electron Microscopy Images taken by Bio4XX3 students under the supervision of Klaus Schultes, Department of Biology, McMaster University. (Contrast, brightness and gamma in modified images were adjusted using Irfanview ver 4.23.)

Diana

Pine Cone Tip



Original



Modified

Scanning Electron Microscopy Images taken by Bio4XX3 students under the supervision of Klaus Schultes, Department of Biology, McMaster University. (Contrast, brightness and gamma in modified images were adjusted using Irfanview ver 4.23.)

Diana

Cross section of pinecone



Original

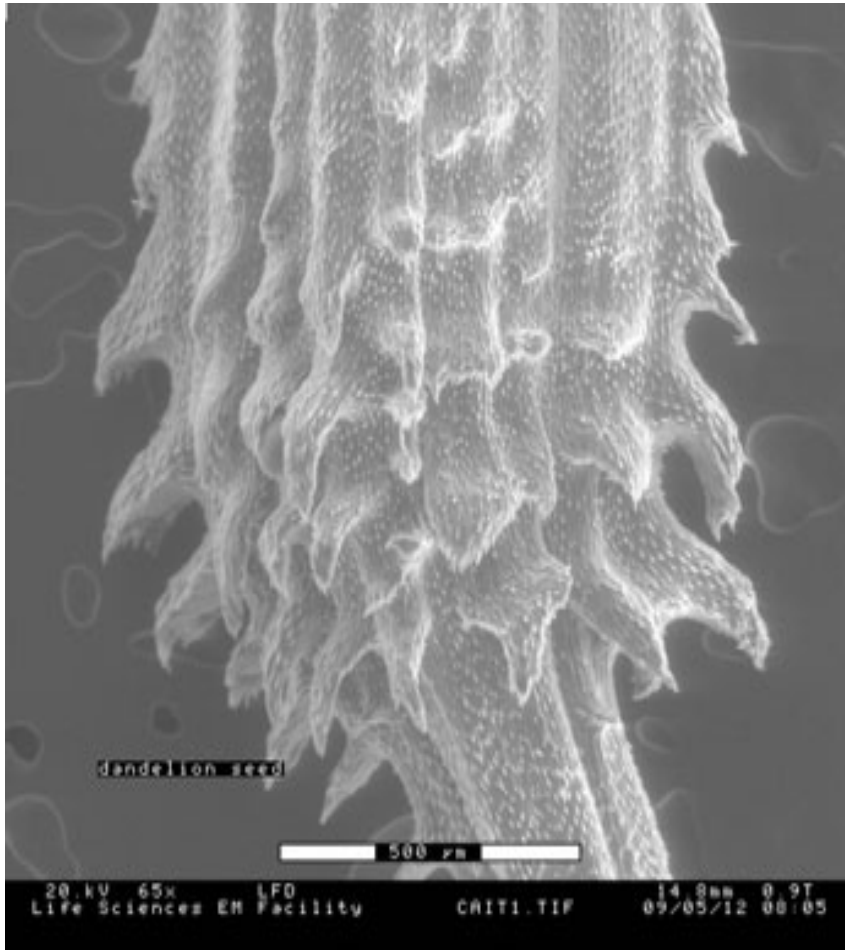


Modified

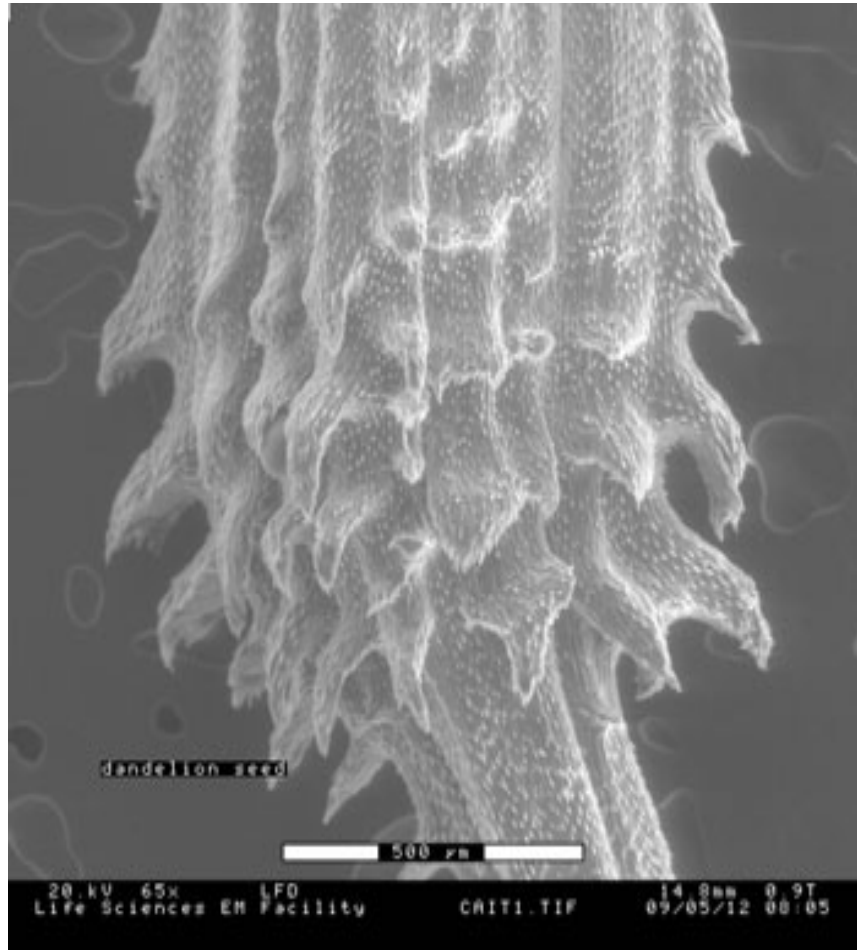
Scanning Electron Microscopy Images taken by Bio4XX3 students under the supervision of Klaus Schultes, Department of Biology, McMaster University. (Contrast, brightness and gamma in modified images were adjusted using Irfanview ver 4.23.)

Caitlin

Dandelion Seed



Original

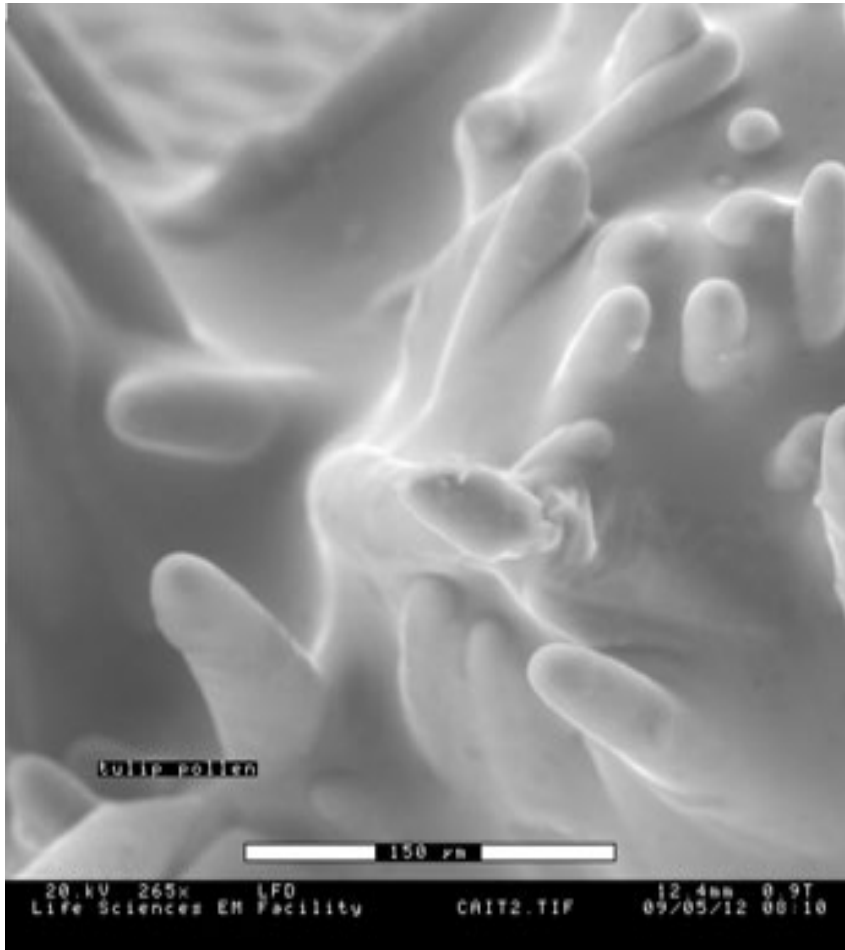


Modified

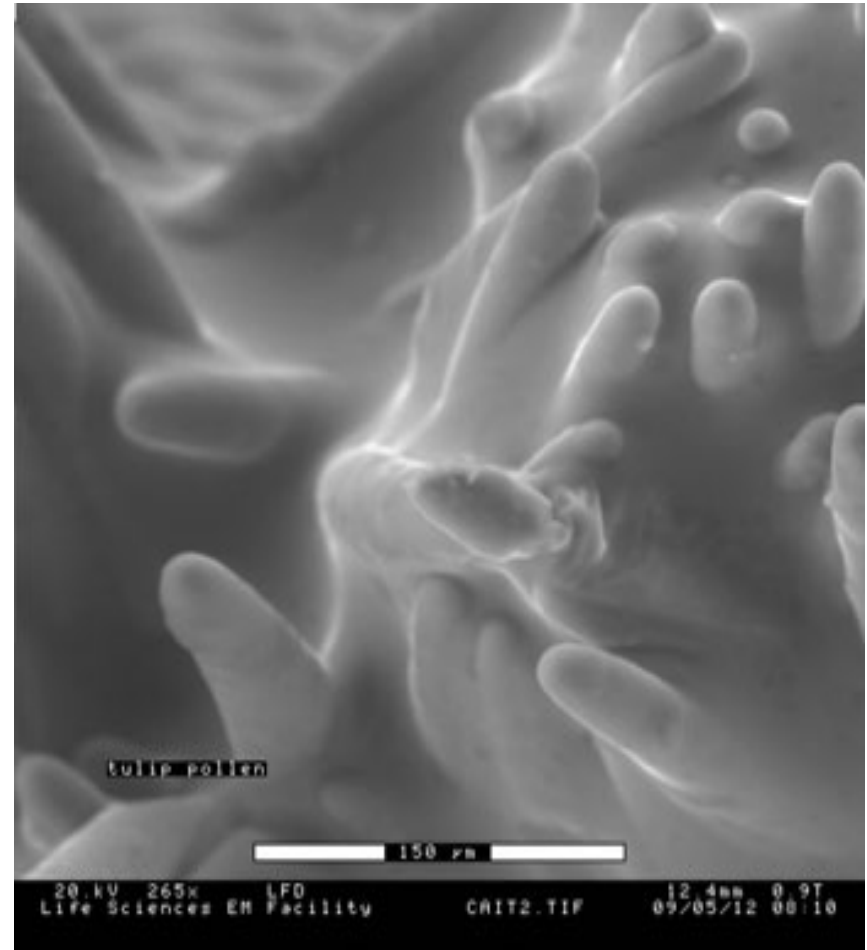
Scanning Electron Microscopy Images taken by Bio4XX3 students under the supervision of Klaus Schultes, Department of Biology, McMaster University. (Contrast, brightness and gamma in modified images were adjusted using Irfanview ver 4.23.)

Caitlin

Tulip Pollen



Original

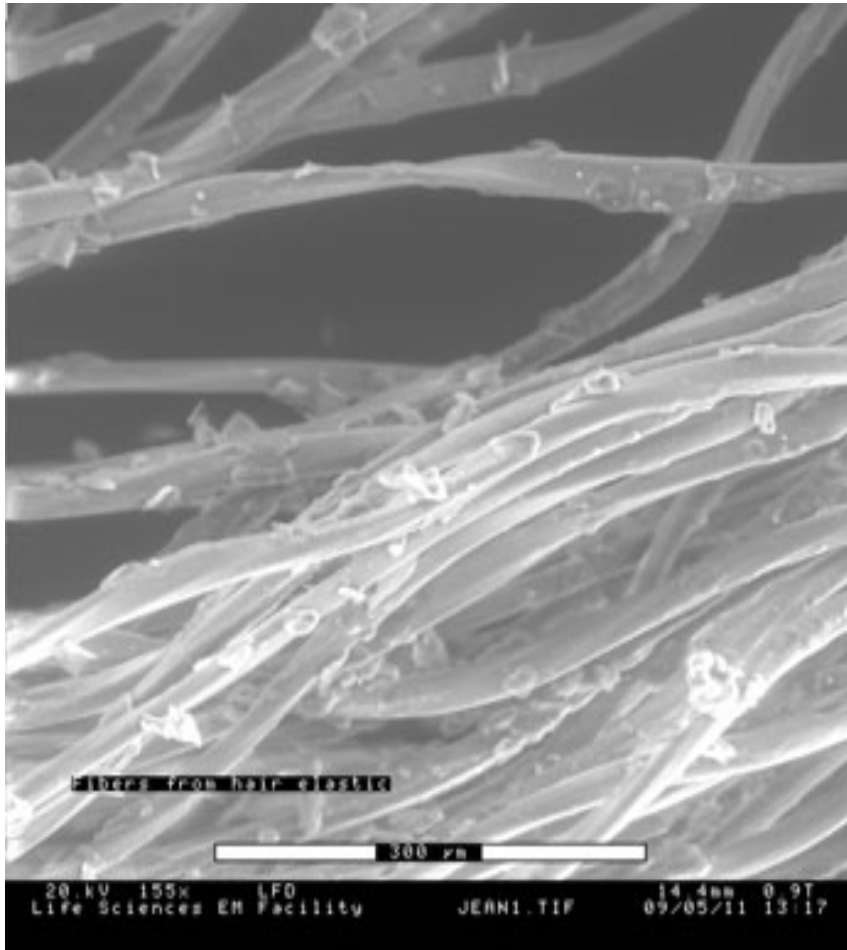


Modified

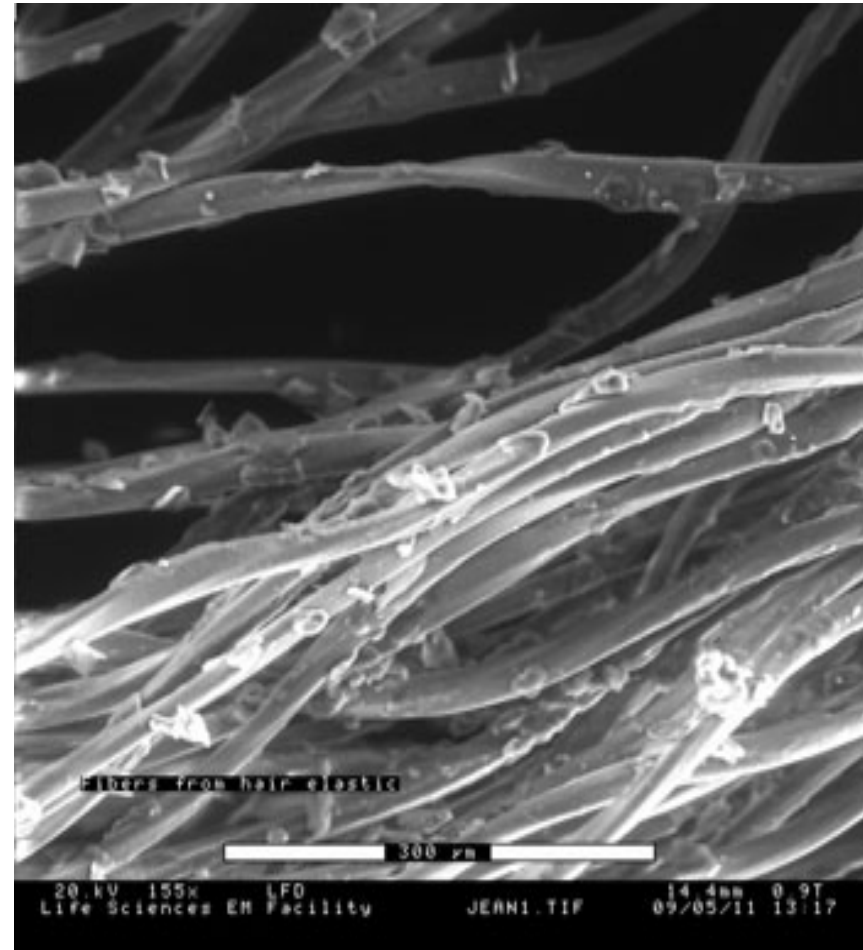
Scanning Electron Microscopy Images taken by Bio4XX3 students under the supervision of Klaus Schultes, Department of Biology, McMaster University. (Contrast, brightness and gamma in modified images were adjusted using Irfanview ver 4.23.)

Jean

Fibers From a Used Hair Elastic



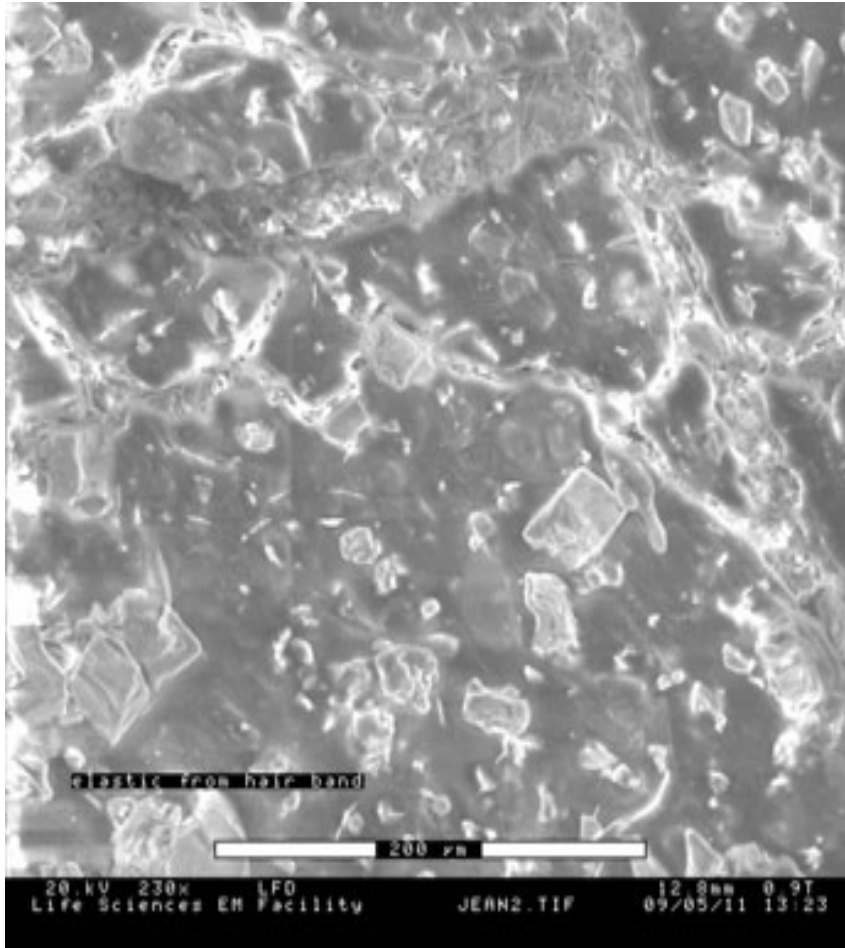
Original



Modified

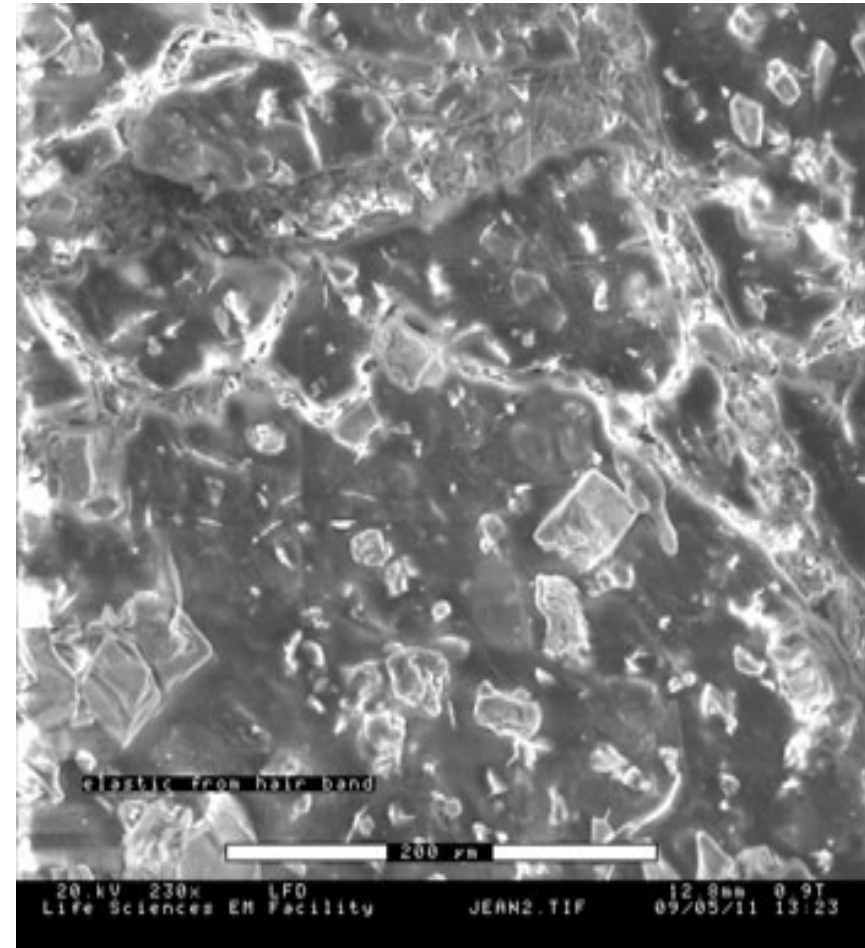
Scanning Electron Microscopy Images taken by Bio4XX3 students under the supervision of Klaus Schultes, Department of Biology, McMaster University. (Contrast, brightness and gamma in modified images were adjusted using Irfanview ver 4.23.)

Jean



Original

Elastic from a Hair Elastic

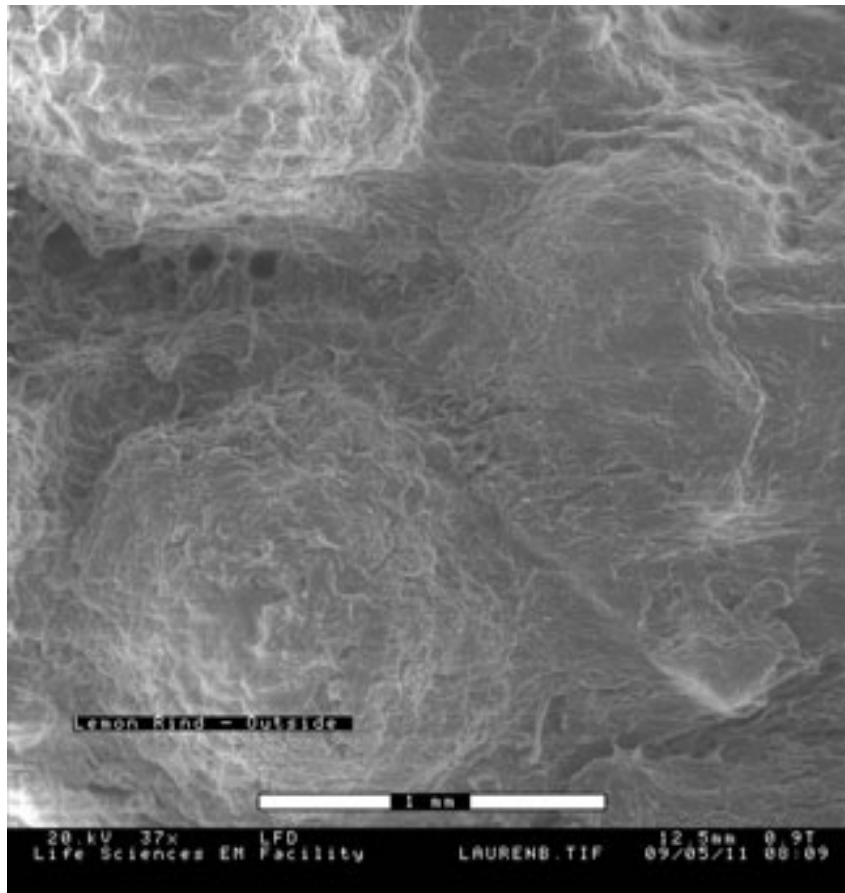


Modified

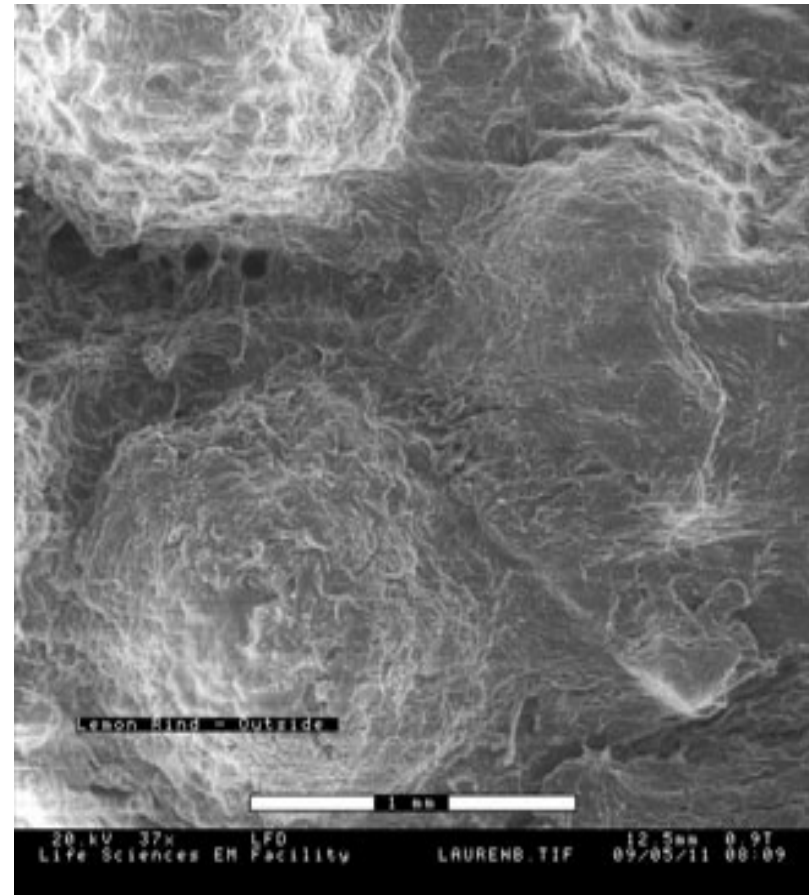
Scanning Electron Microscopy Images taken by Bio4XX3 students under the supervision of Klaus Schultes, Department of Biology, McMaster University. (Contrast, brightness and gamma in modified images were adjusted using Irfanview ver 4.23.)

Lauren

Outside of a Lemon Rind



Original

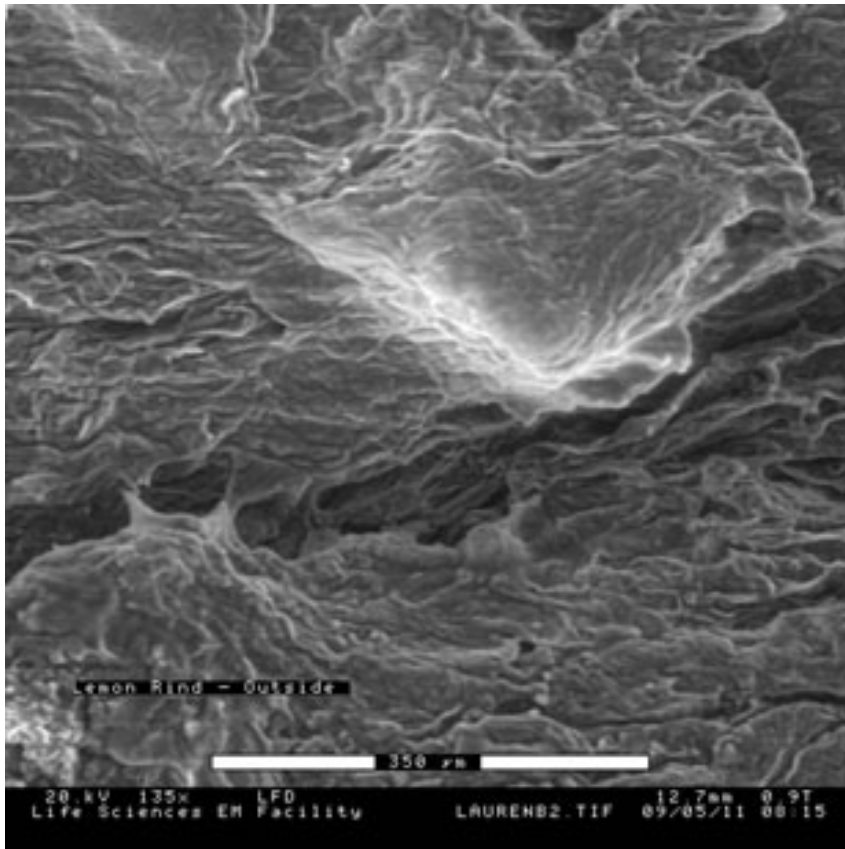


Modified

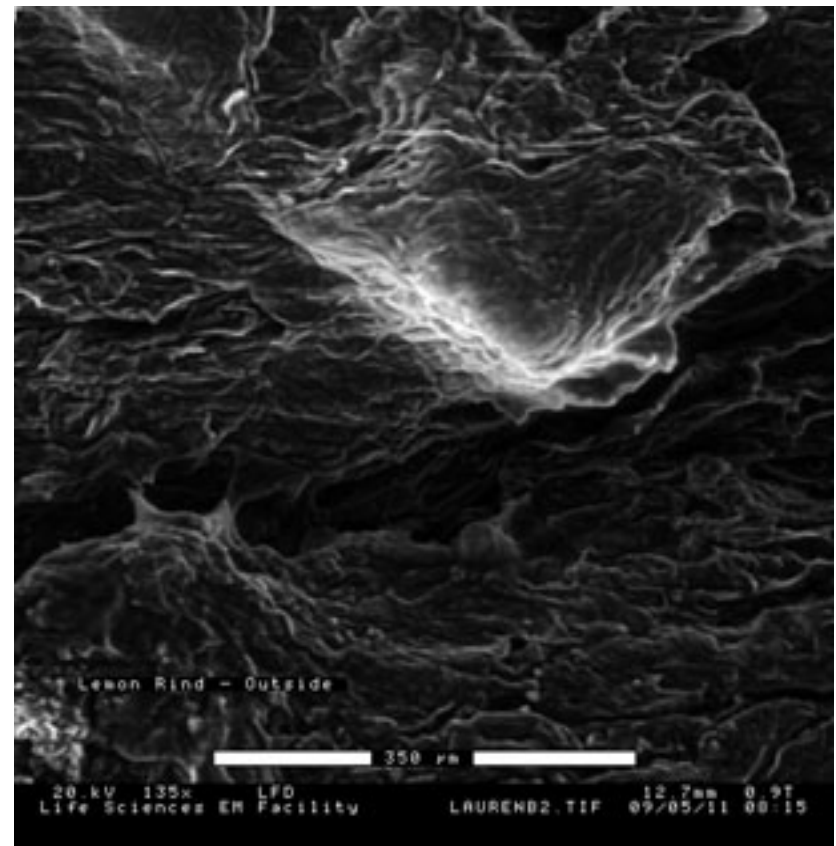
Scanning Electron Microscopy Images taken by Bio4XX3 students under the supervision of Klaus Schultes, Department of Biology, McMaster University. (Contrast, brightness and gamma in modified images were adjusted using Irfanview ver 4.23.)

Lauren

Magnified Outside of Lemon rind



Original

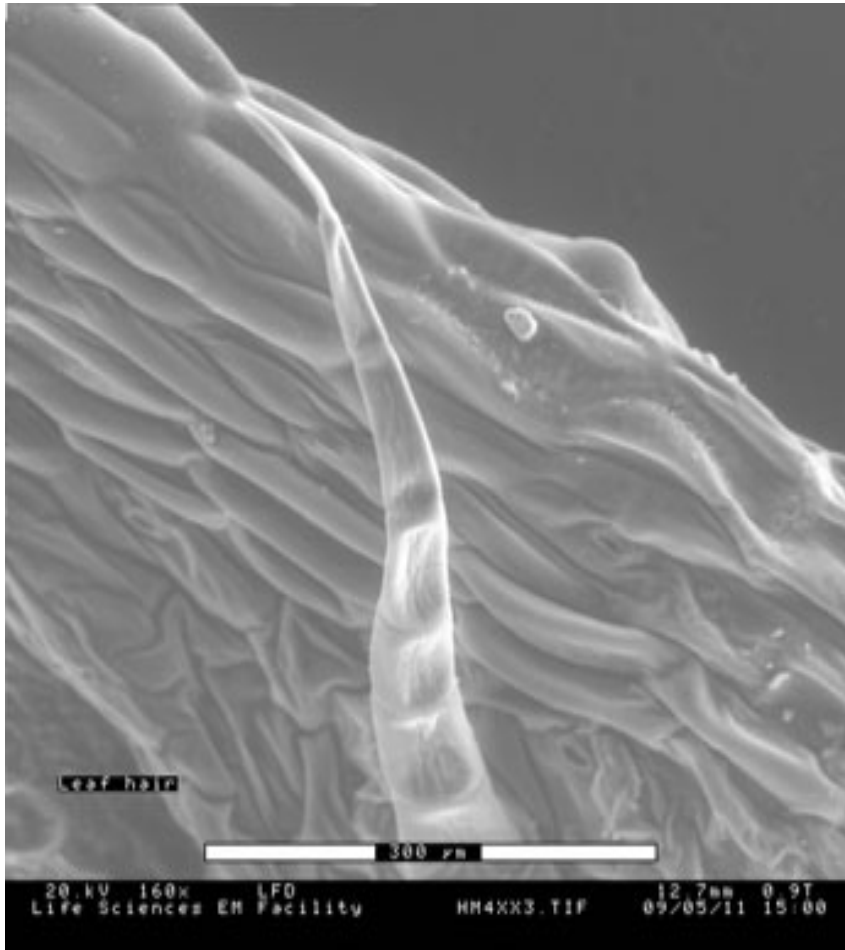


Modified

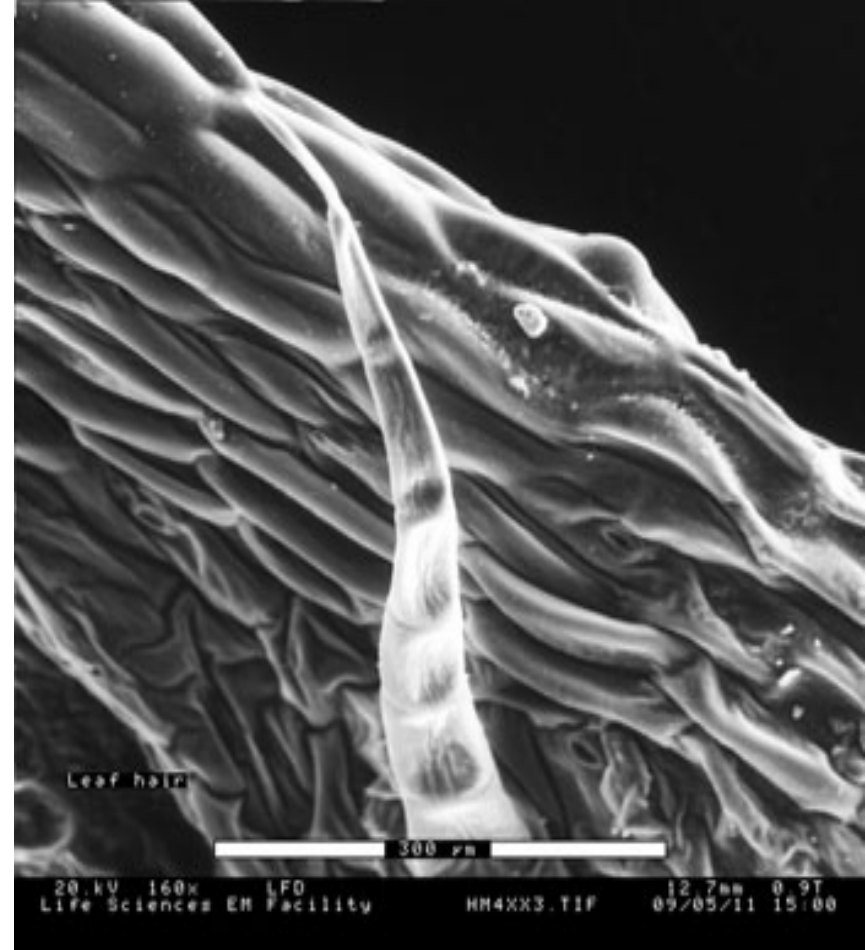
Scanning Electron Microscopy Images taken by Bio4XX3 students under the supervision of Klaus Schultes, Department of Biology, McMaster University. (Contrast, brightness and gamma in modified images were adjusted using Irfanview ver 4.23.)

Hamza

Leaf cross section



Original

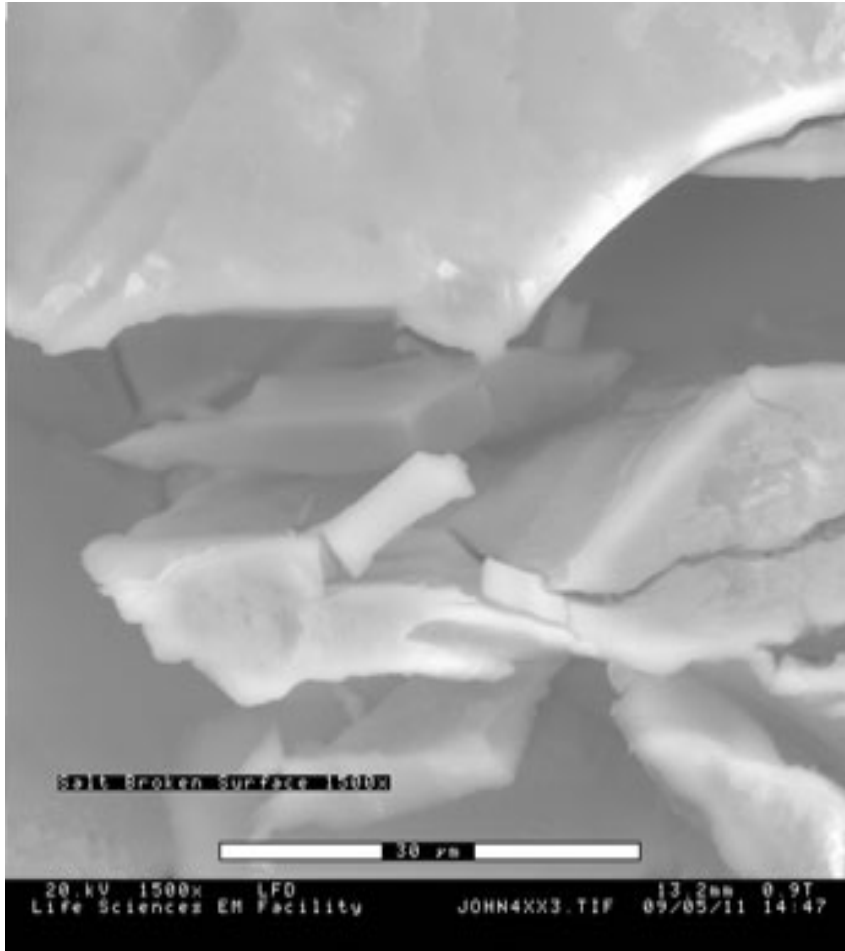


Modified

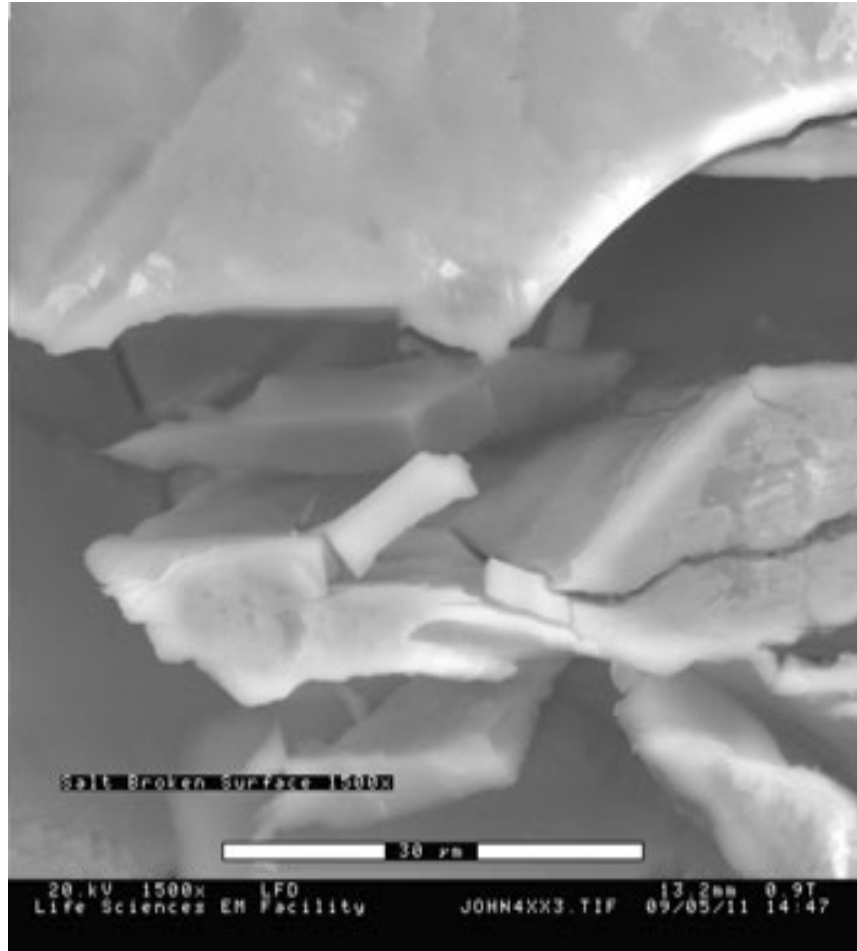
Scanning Electron Microscopy Images taken by Bio4XX3 students under the supervision of Klaus Schultes, Department of Biology, McMaster University. (Contrast, brightness and gamma in modified images were adjusted using Irfanview ver 4.23.)

John

Salt at 1500x



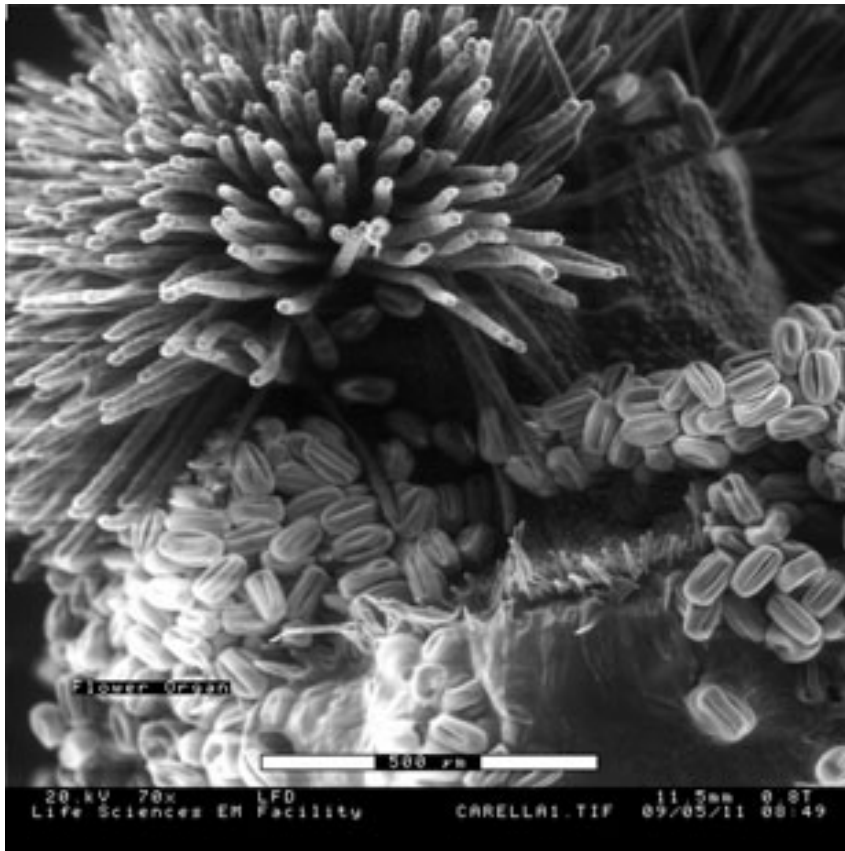
Original



Modified

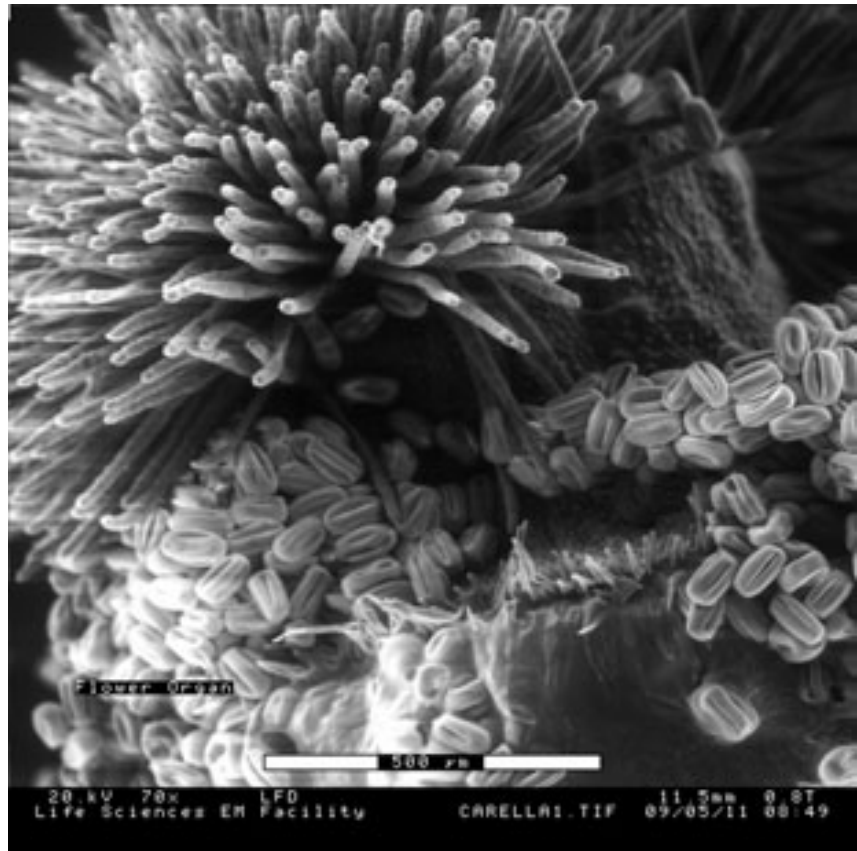
Scanning Electron Microscopy Images taken by Bio4XX3 students under the supervision of Klaus Schultes, Department of Biology, McMaster University. (Contrast, brightness and gamma in modified images were adjusted using Irfanview ver 4.23.)

Philip



Original

Flower

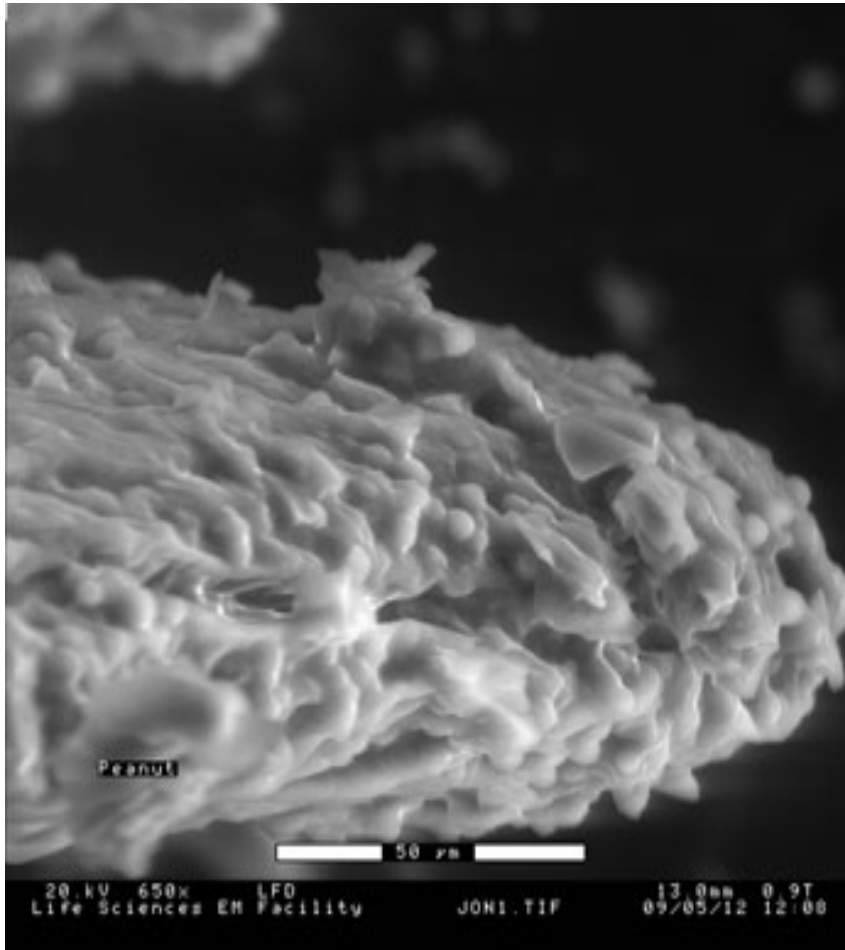


Modified

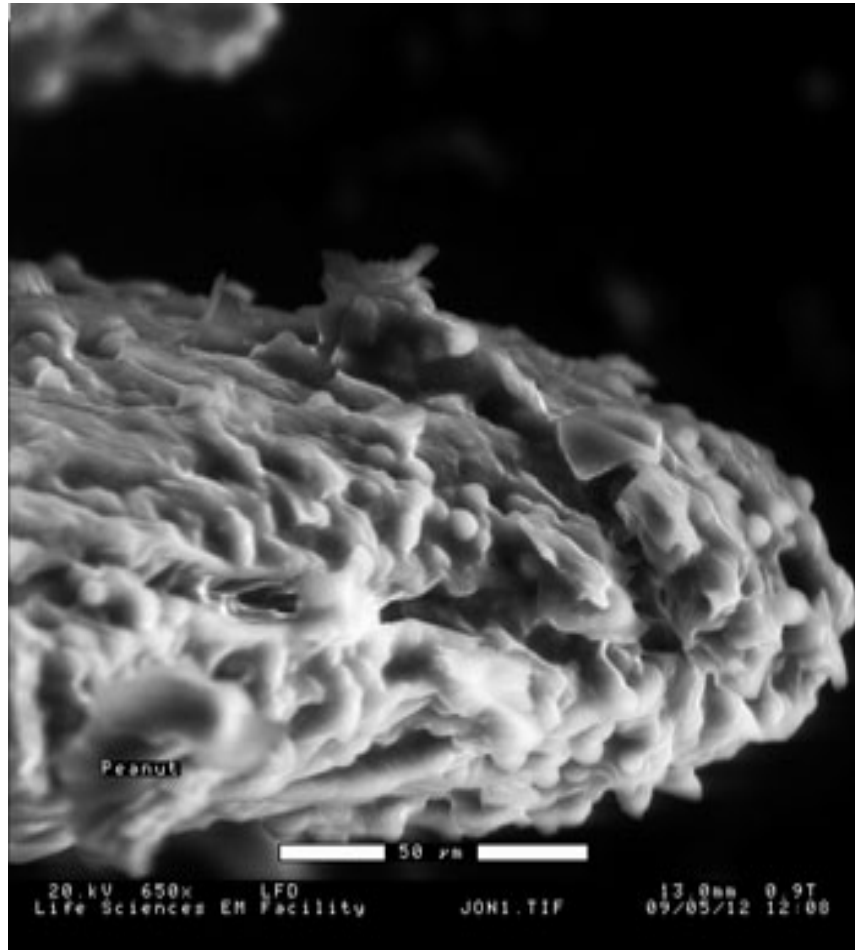
Scanning Electron Microscopy Images taken by Bio4XX3 students under the supervision of Klaus Schultes, Department of Biology, McMaster University. (Contrast, brightness and gamma in modified images were adjusted using Irfanview ver 4.23.)

Jonathan O'Brien

Fractured Peanut



Original

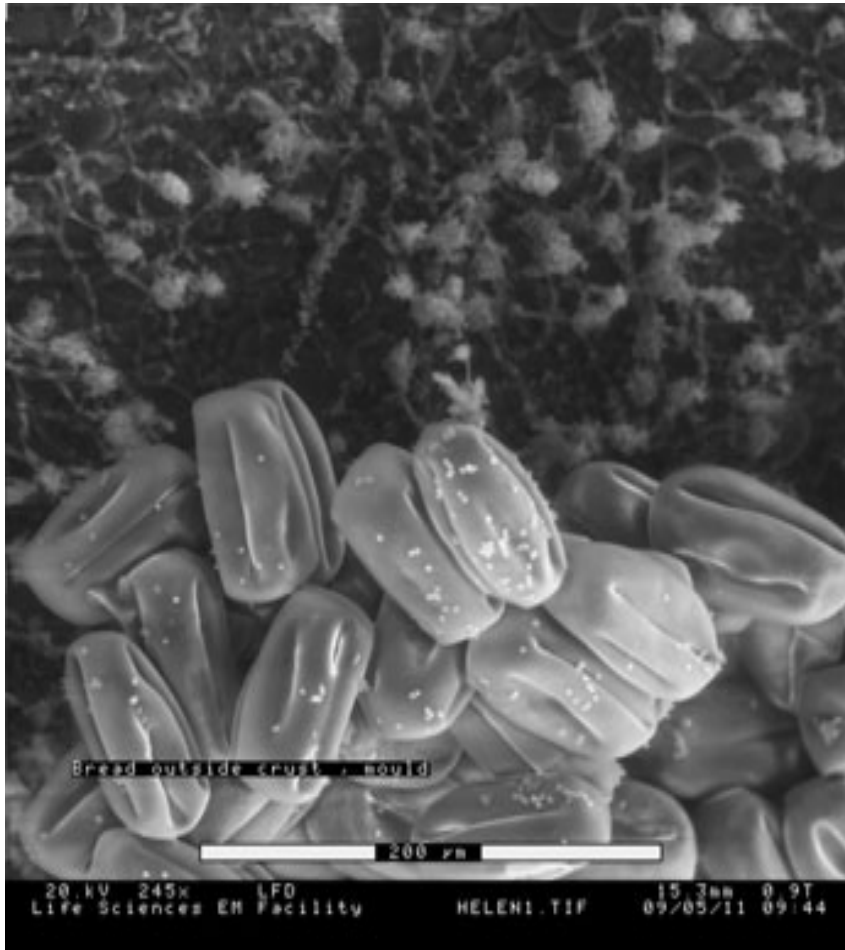


Modified

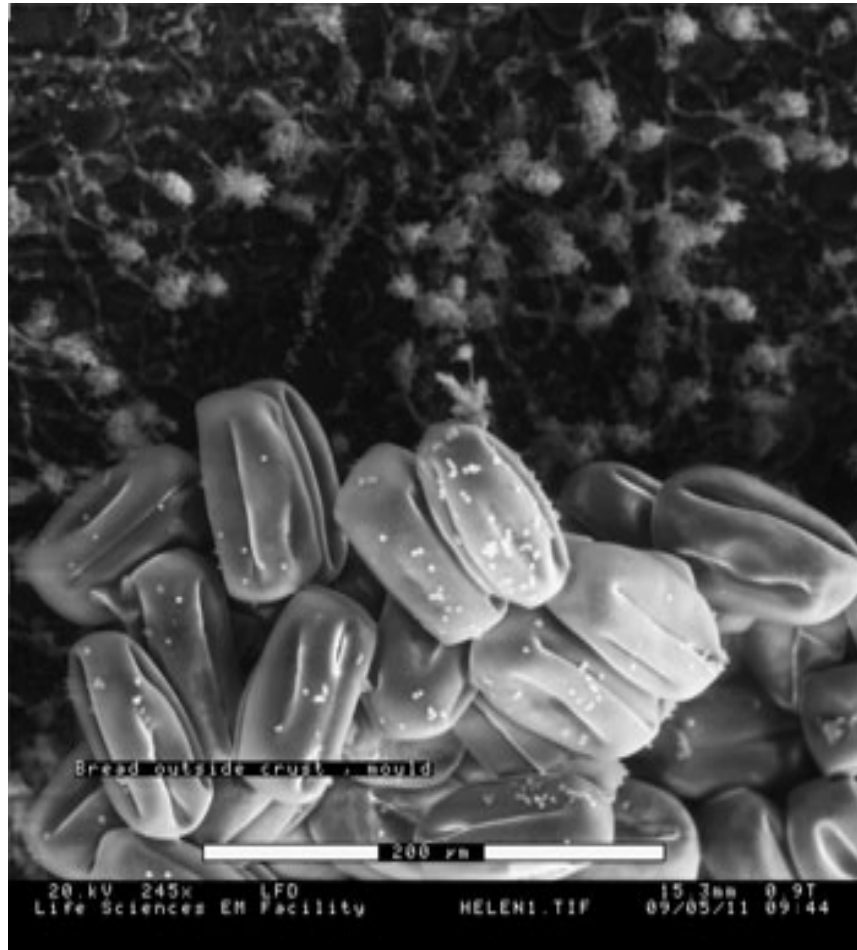
Scanning Electron Microscopy Images taken by Bio4XX3 students under the supervision of Klaus Schultes, Department of Biology, McMaster University. (Contrast, brightness and gamma in modified images were adjusted using Irfanview ver 4.23.)

Helen Chow

Bread outside crust, mould



Original

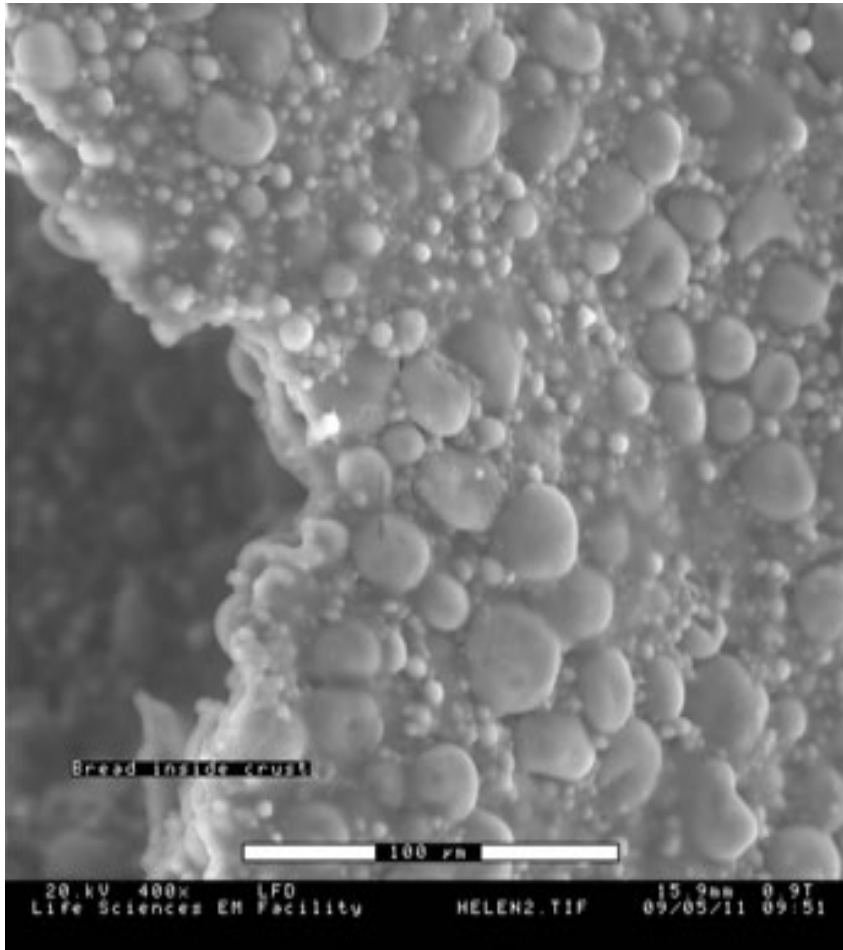


Modified

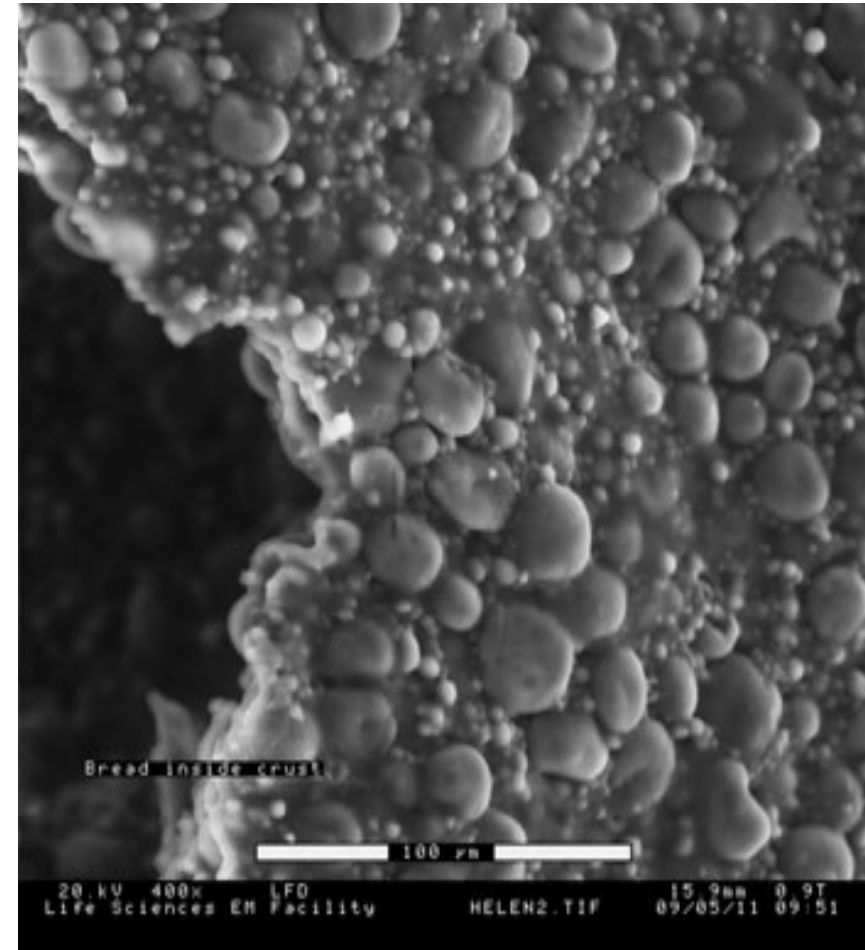
Scanning Electron Microscopy Images taken by Bio4XX3 students under the supervision of Klaus Schultes, Department of Biology, McMaster University. (Contrast, brightness and gamma in modified images were adjusted using Irfanview ver 4.23.)

Helen Chow

Bread, inside crust



Original

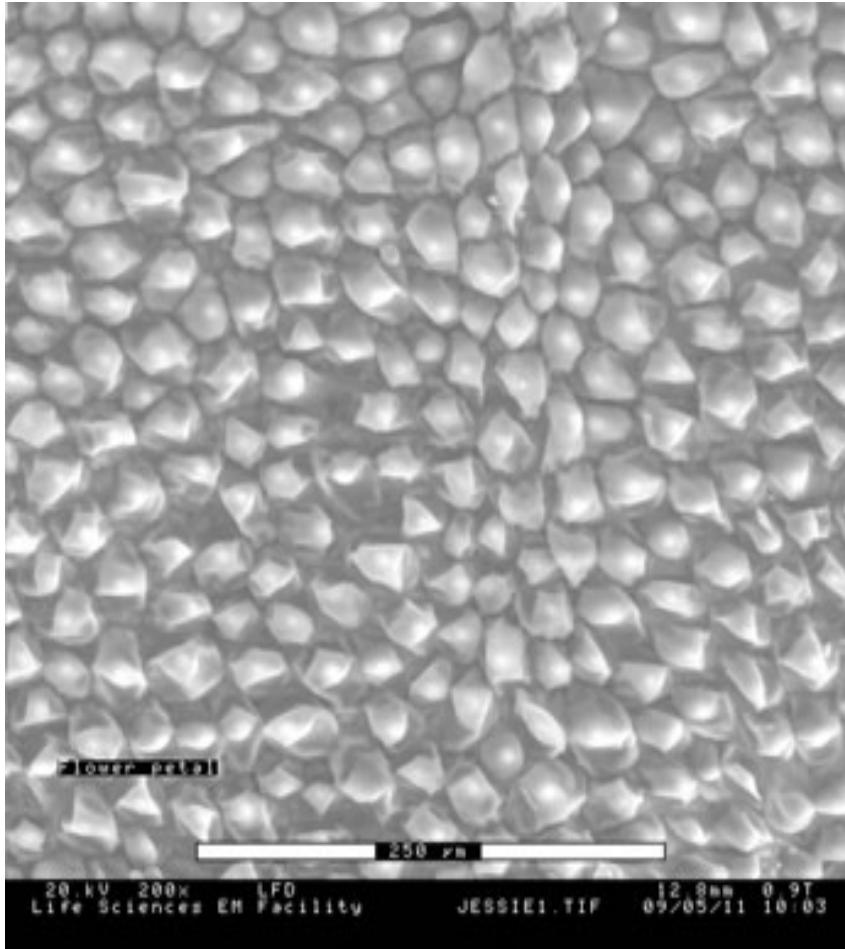


Modified

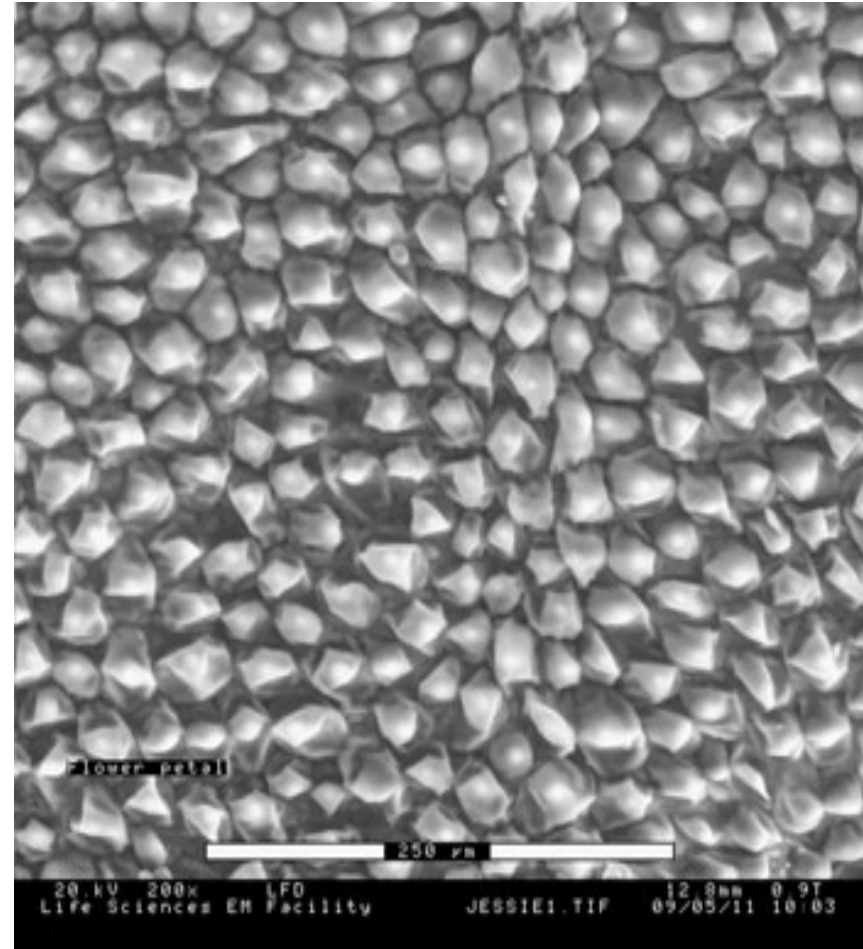
Scanning Electron Microscopy Images taken by Bio4XX3 students under the supervision of Klaus Schultes, Department of Biology, McMaster University. (Contrast, brightness and gamma in modified images were adjusted using Irfanview ver 4.23.)

Jessie Chau

Flower Petal Surface



Original

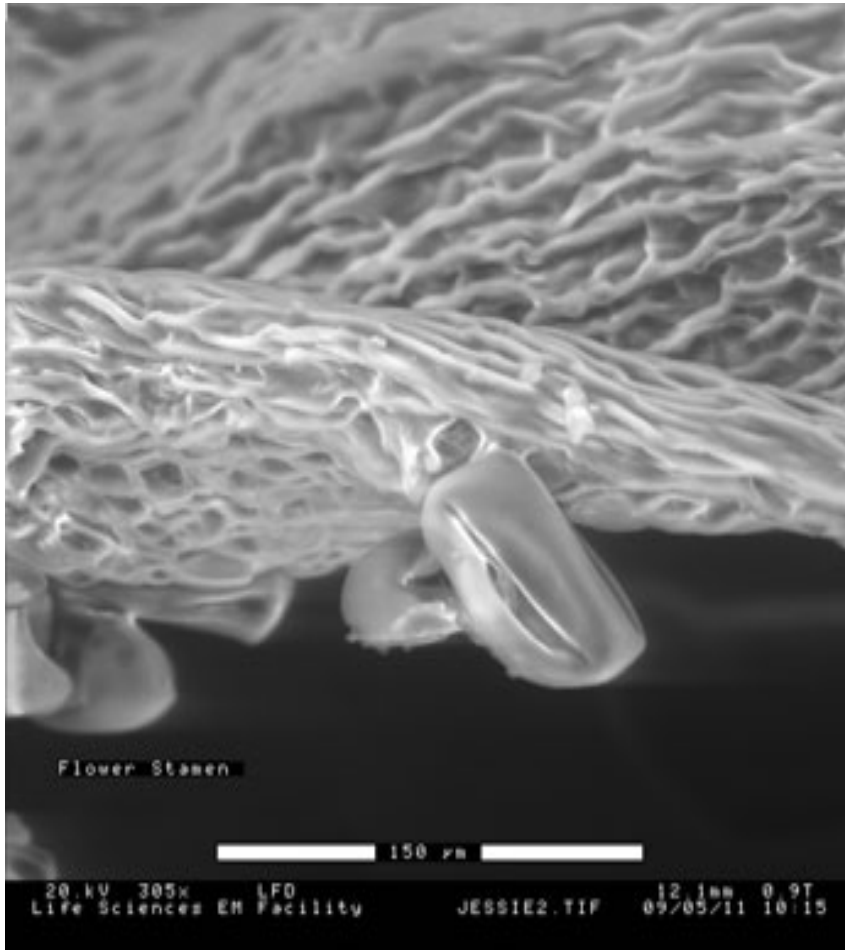


Modified

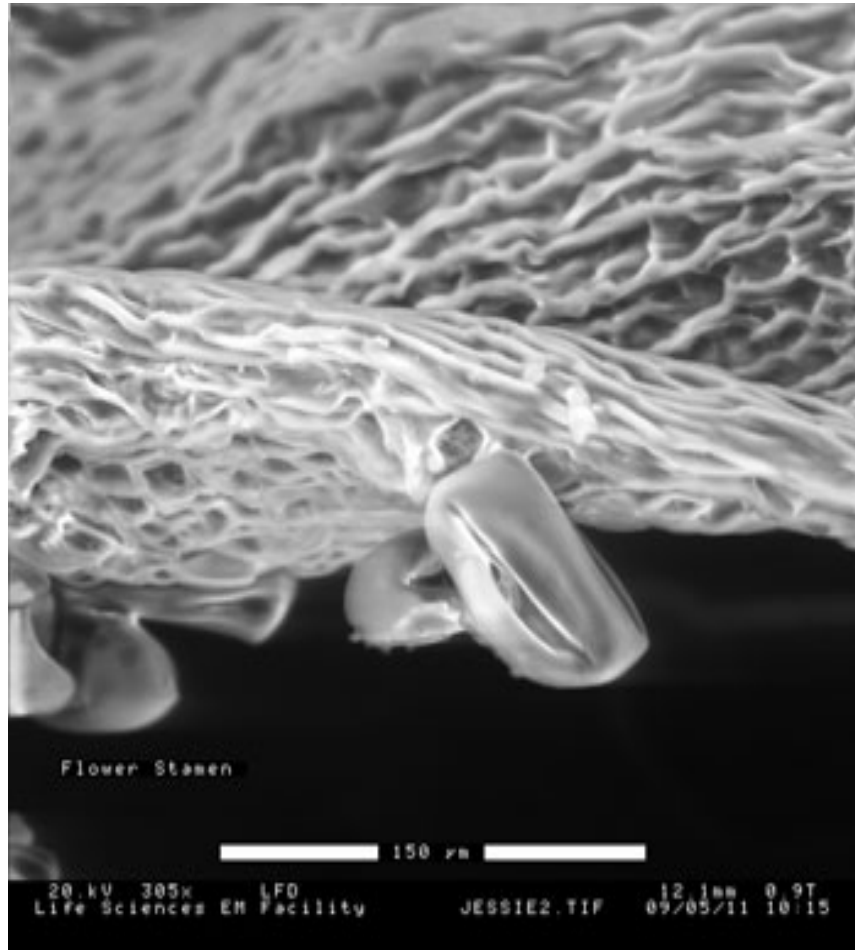
Scanning Electron Microscopy Images taken by Bio4XX3 students under the supervision of Klaus Schultes, Department of Biology, McMaster University. (Contrast, brightness and gamma in modified images were adjusted using Irfanview ver 4.23.)

Jessie Chau

Flower Stamen



Original

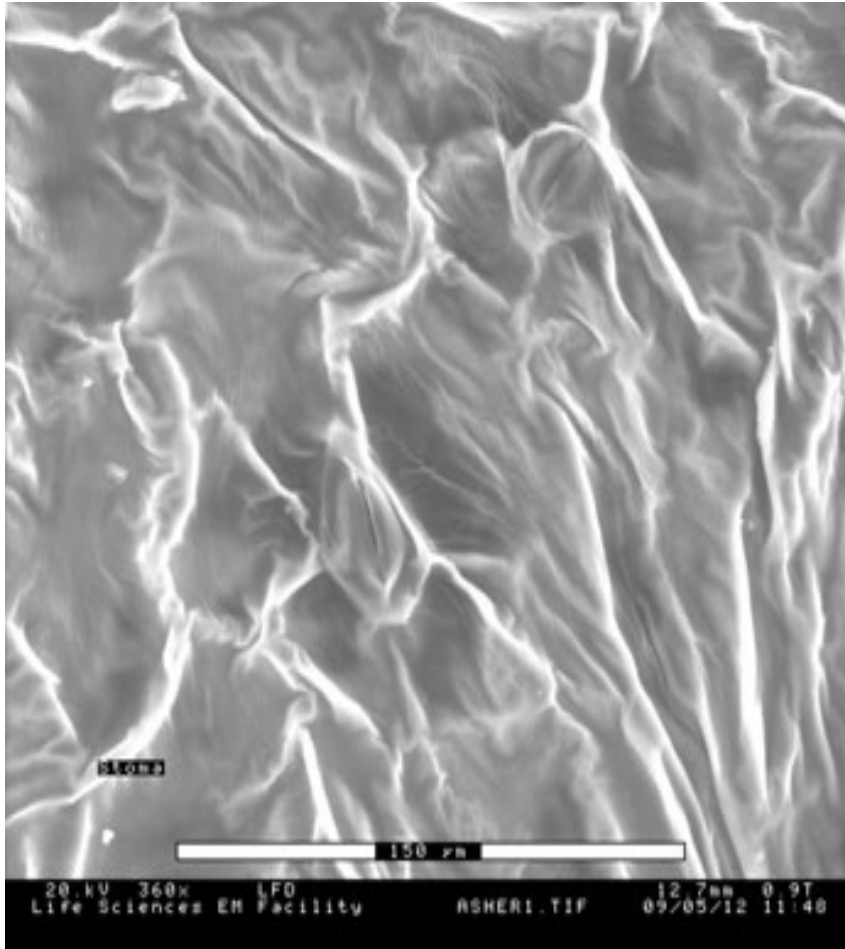


Modified

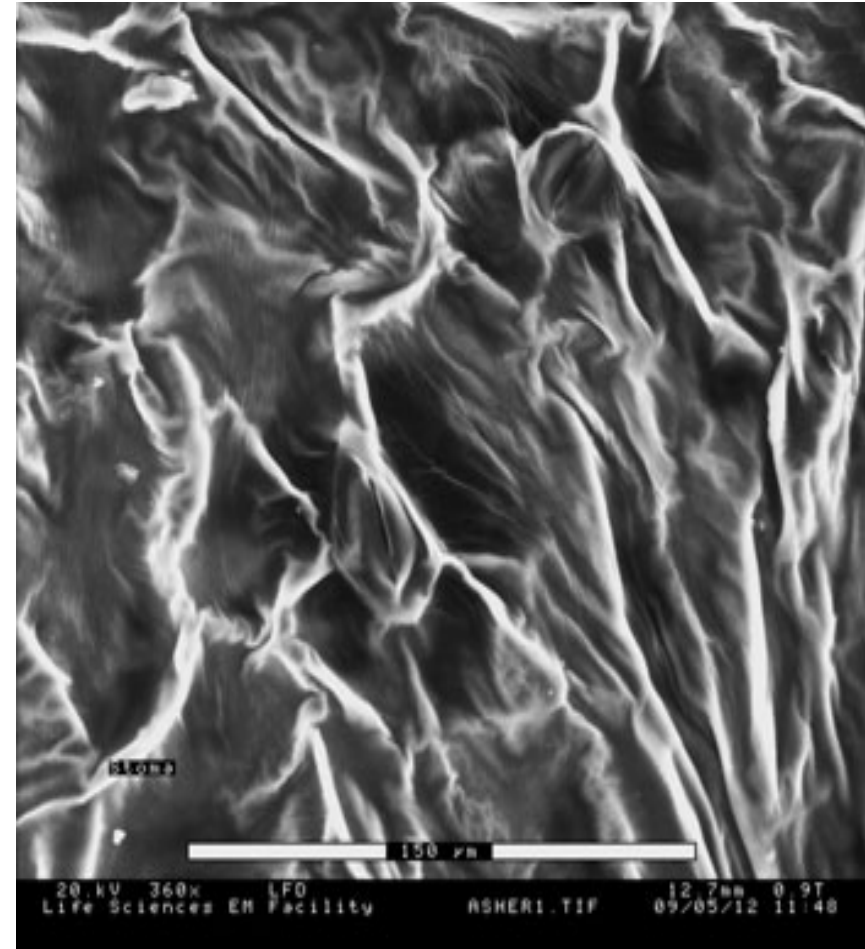
Scanning Electron Microscopy Images taken by Bio4XX3 students under the supervision of Klaus Schultes, Department of Biology, McMaster University. (Contrast, brightness and gamma in modified images were adjusted using Irfanview ver 4.23.)

Asher Pasha

Stoma



Original

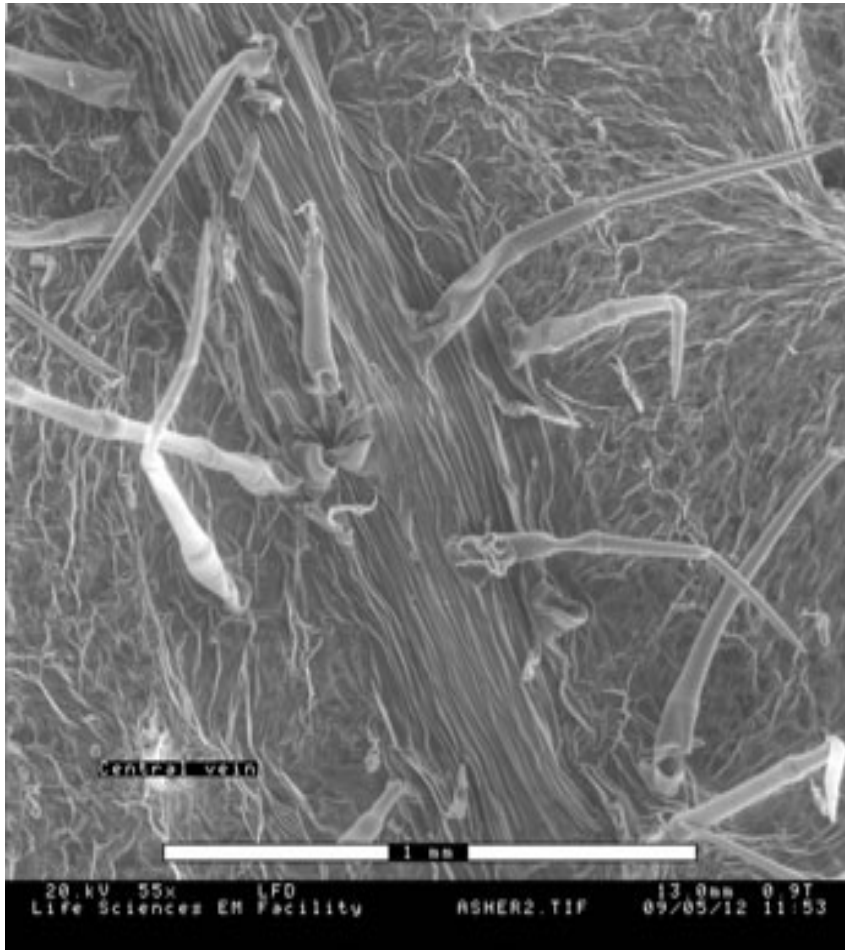


Modified

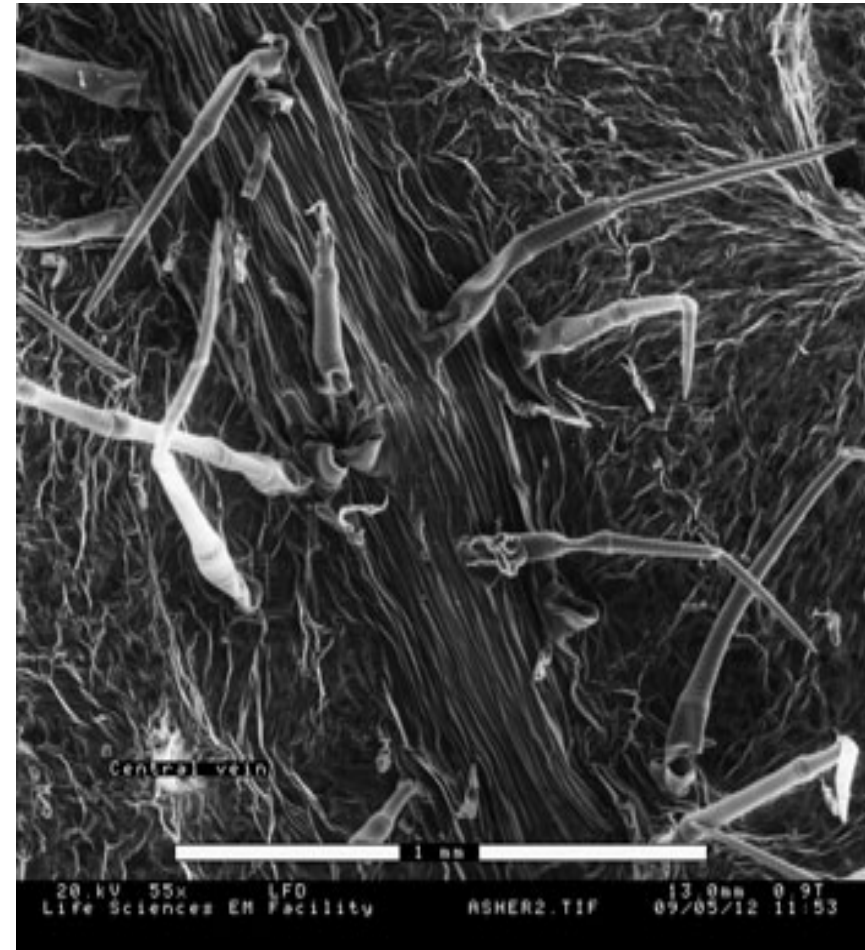
Scanning Electron Microscopy Images taken by Bio4XX3 students under the supervision of Klaus Schultes, Department of Biology, McMaster University. (Contrast, brightness and gamma in modified images were adjusted using Irfanview ver 4.23.)

Asher Pasha

Central vein



Original

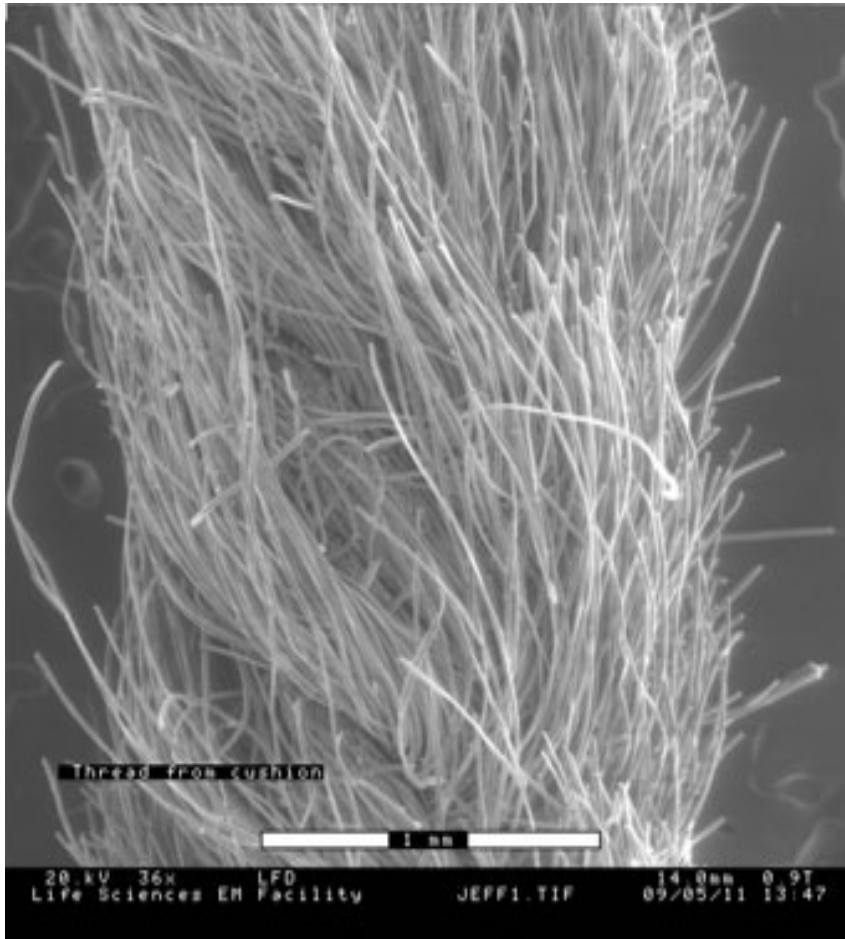


Modified

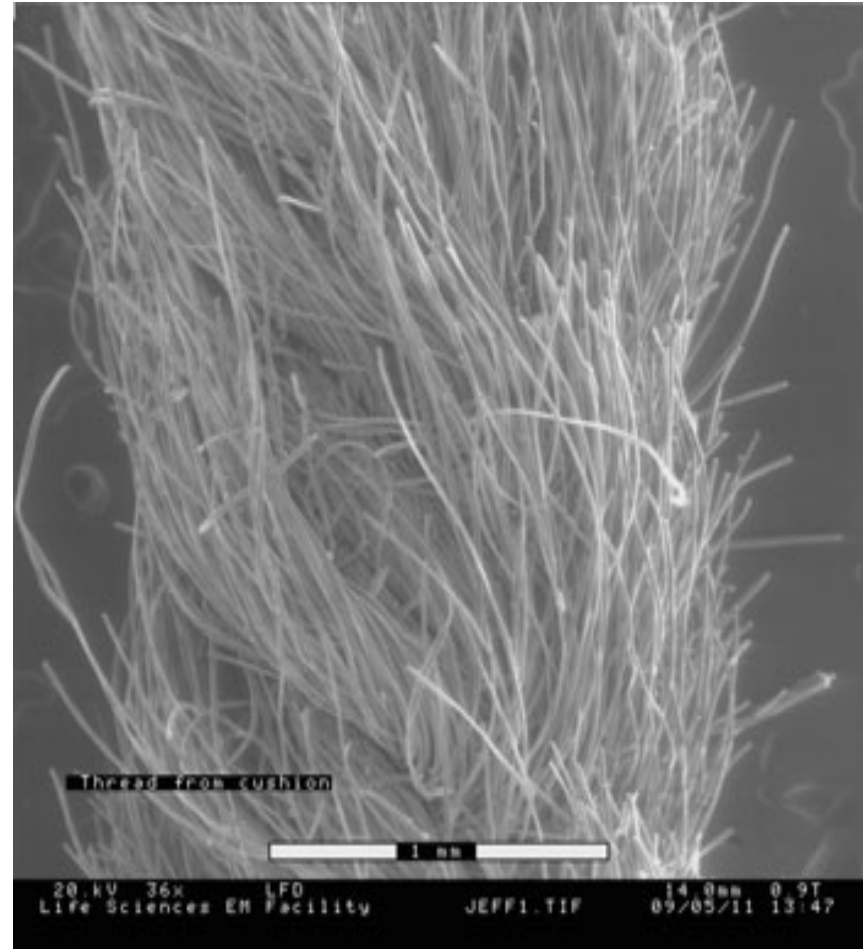
Scanning Electron Microscopy Images taken by Bio4XX3 students under the supervision of Klaus Schultes, Department of Biology, McMaster University. (Contrast, brightness and gamma in modified images were adjusted using Irfanview ver 4.23.)

Jeff Lee

Thread from Cushion



Original

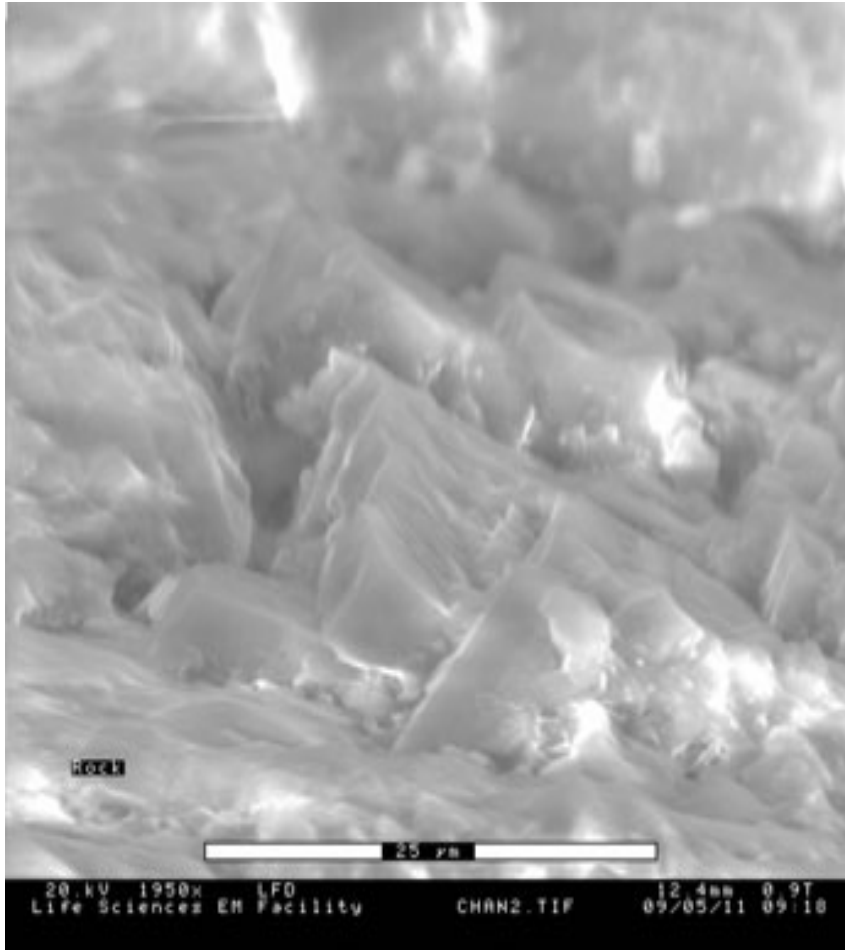


Modified

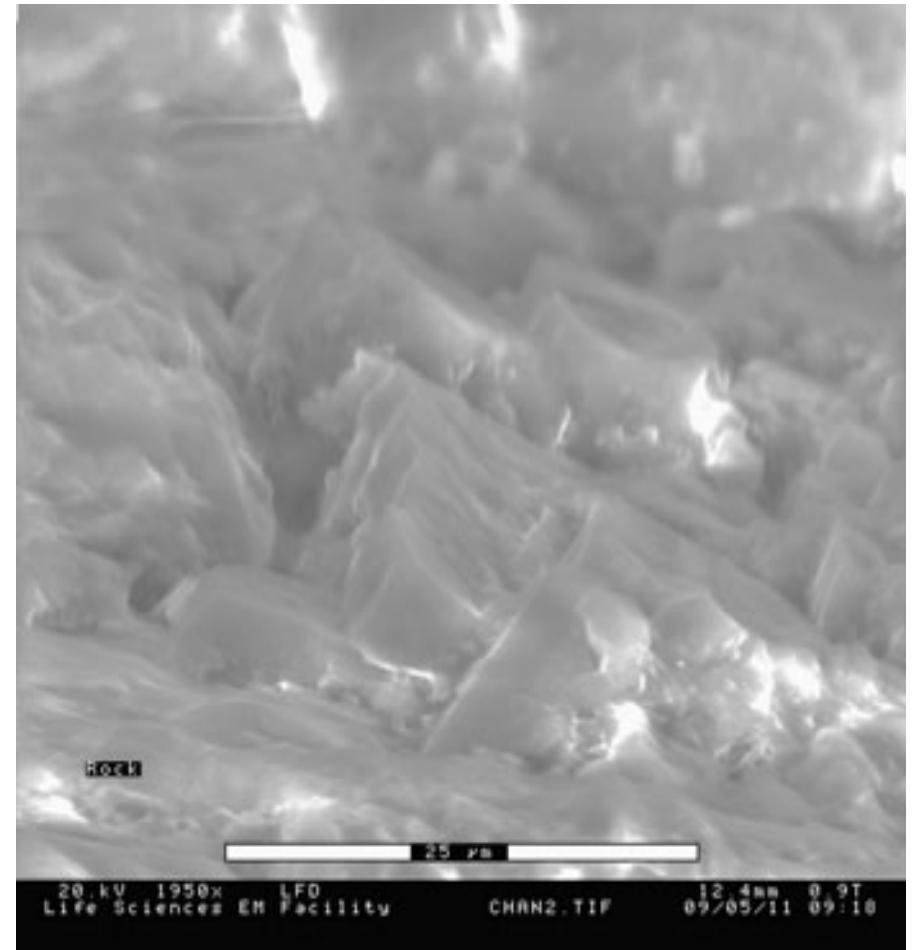
Scanning Electron Microscopy Images taken by Bio4XX3 students under the supervision of Klaus Schultes, Department of Biology, McMaster University. (Contrast, brightness and gamma in modified images were adjusted using Irfanview ver 4.23.)

Ellis Chan

Rock



Original

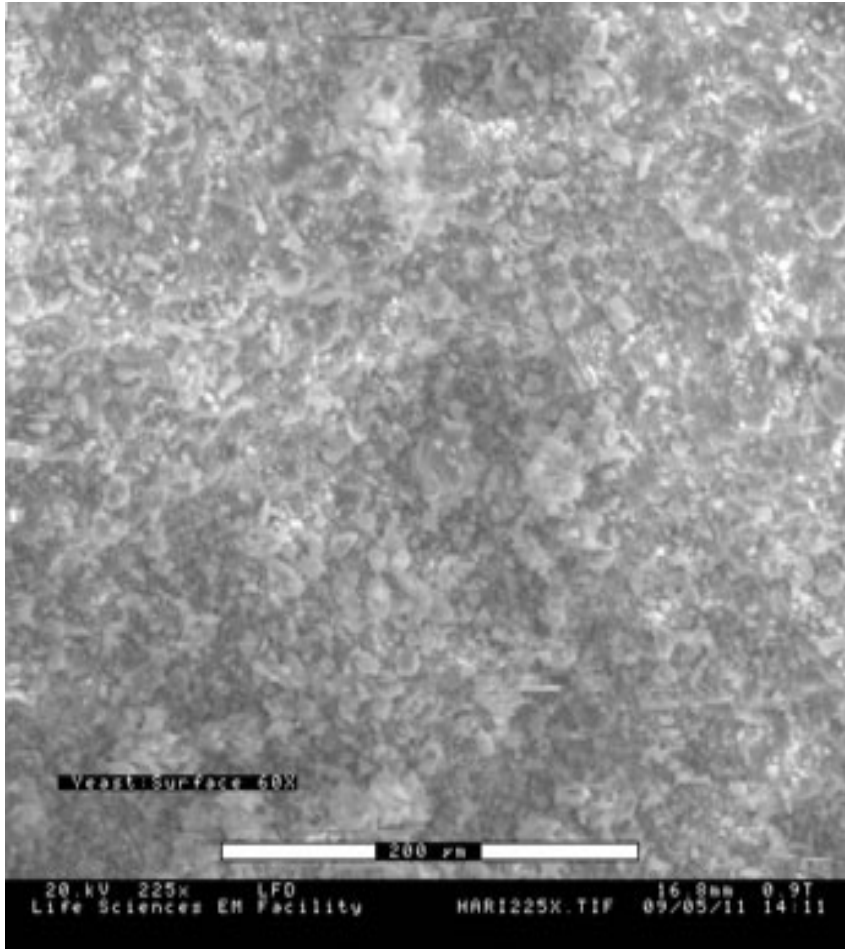


Modified

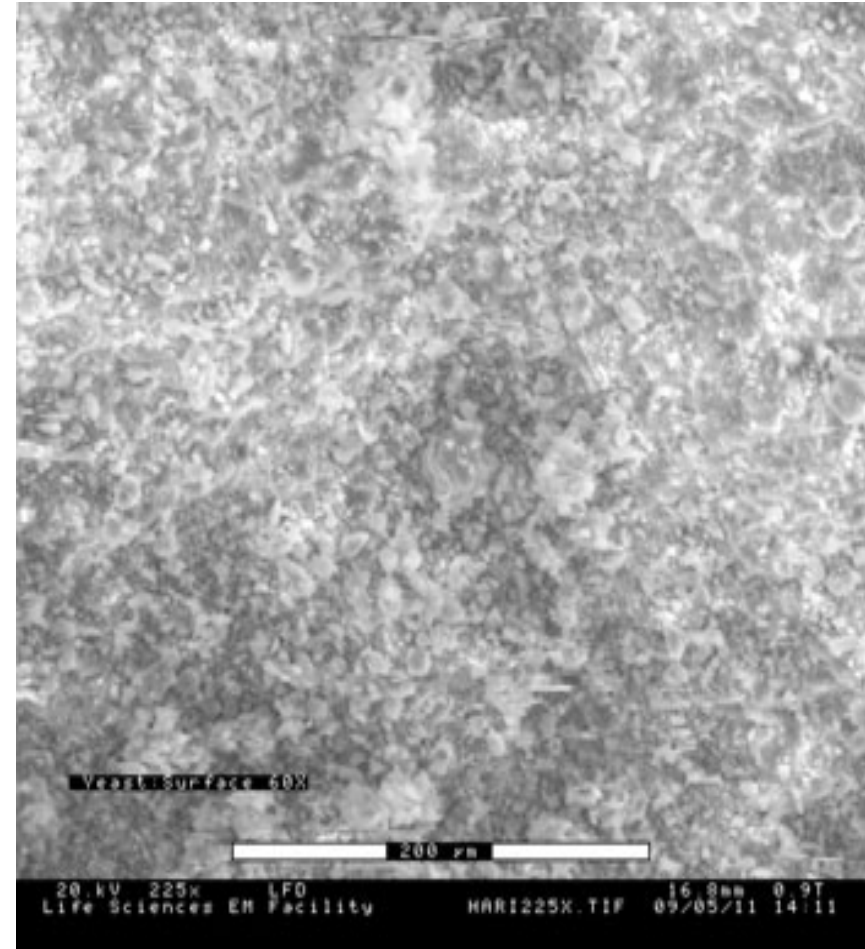
Scanning Electron Microscopy Images taken by Bio4XX3 students under the supervision of Klaus Schultes, Department of Biology, McMaster University. (Contrast, brightness and gamma in modified images were adjusted using Irfanview ver 4.23.)

Harinad Maganti

Yeast



Original

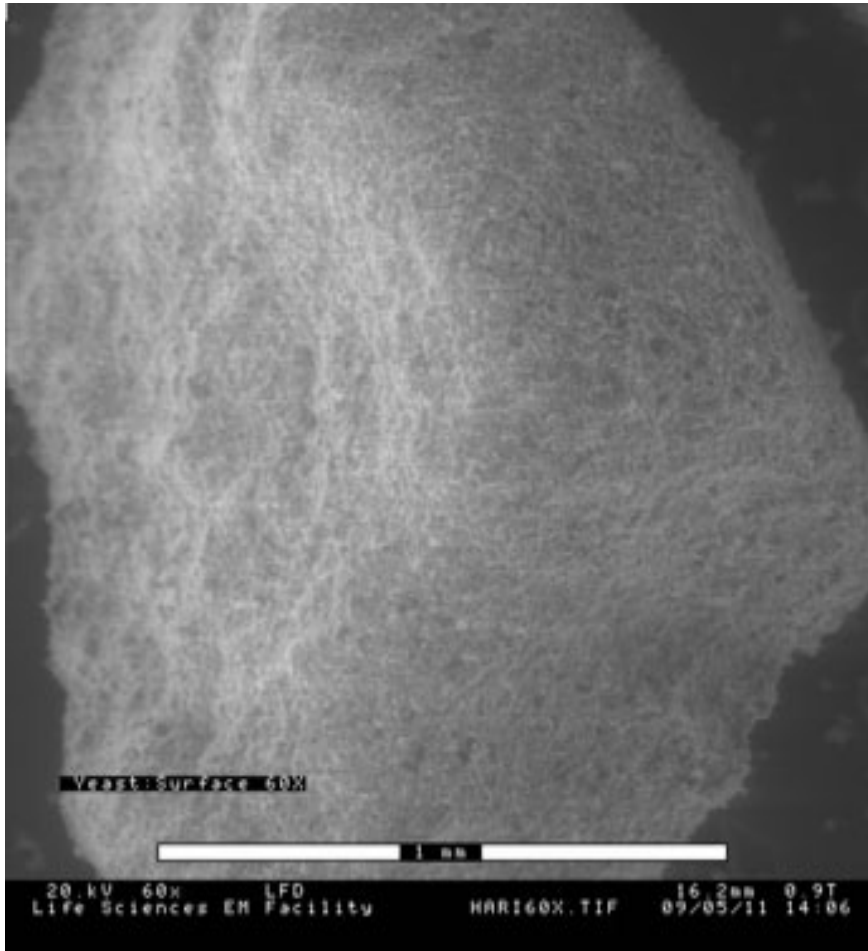


Modified

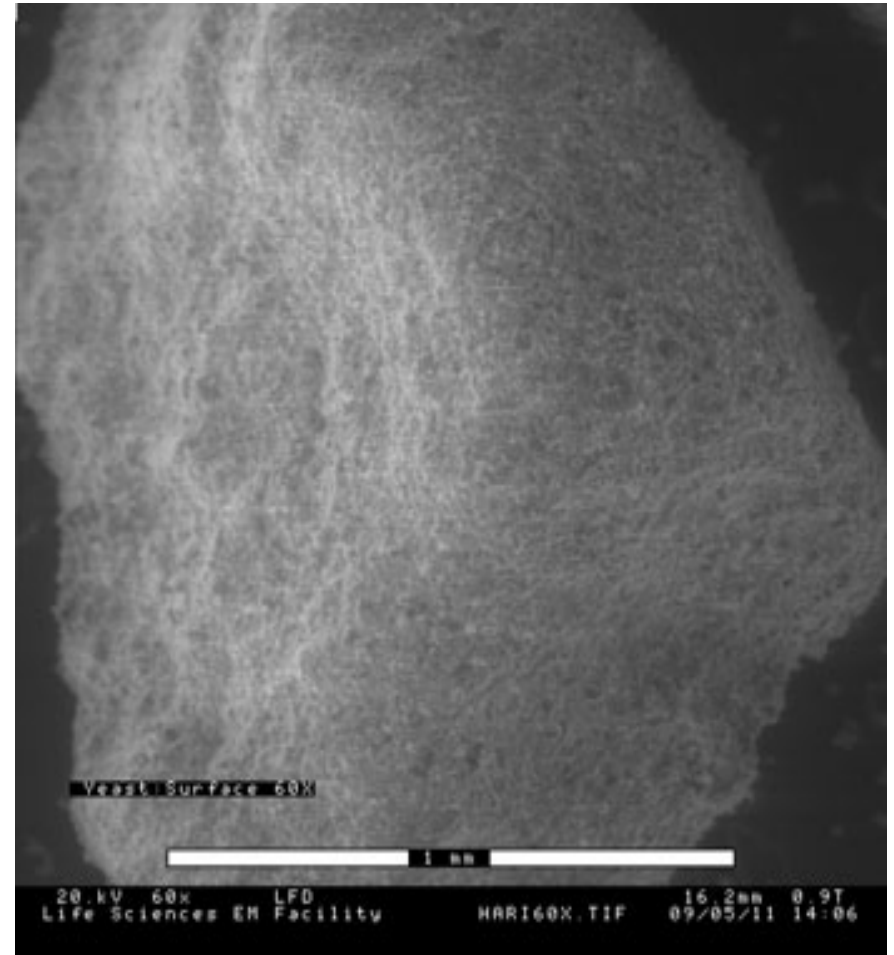
Scanning Electron Microscopy Images taken by Bio4XX3 students under the supervision of Klaus Schultes, Department of Biology, McMaster University. (Contrast, brightness and gamma in modified images were adjusted using Irfanview ver 4.23.)

Harinad Maganti

Yeast



Original

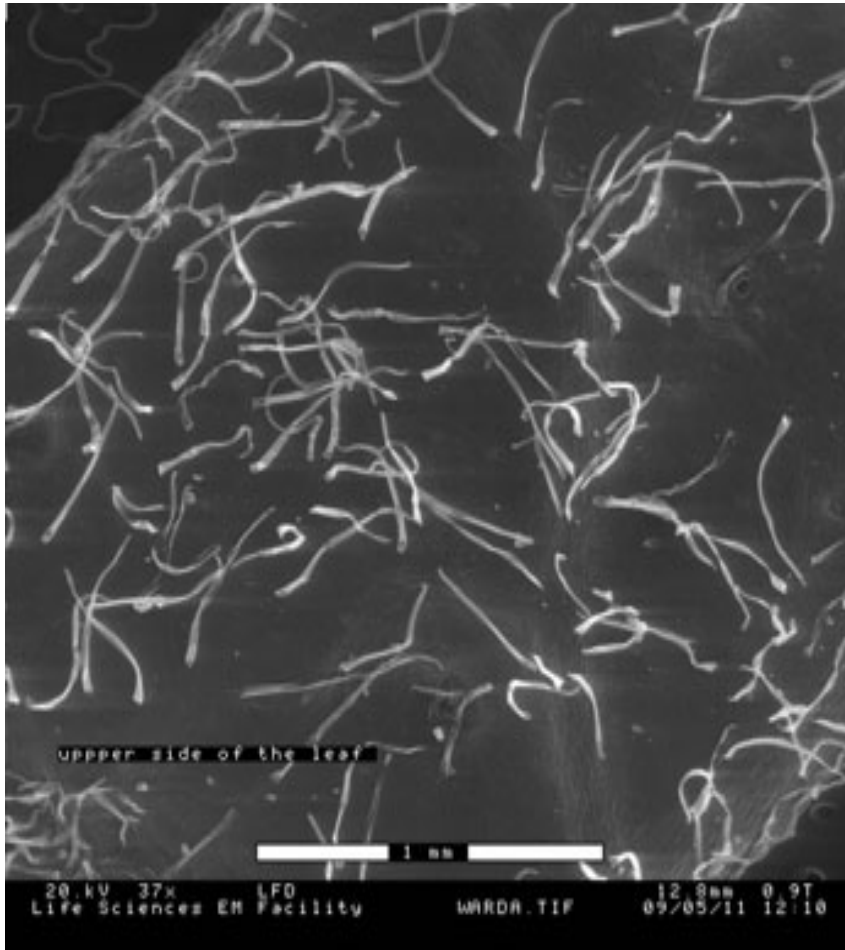


Modified

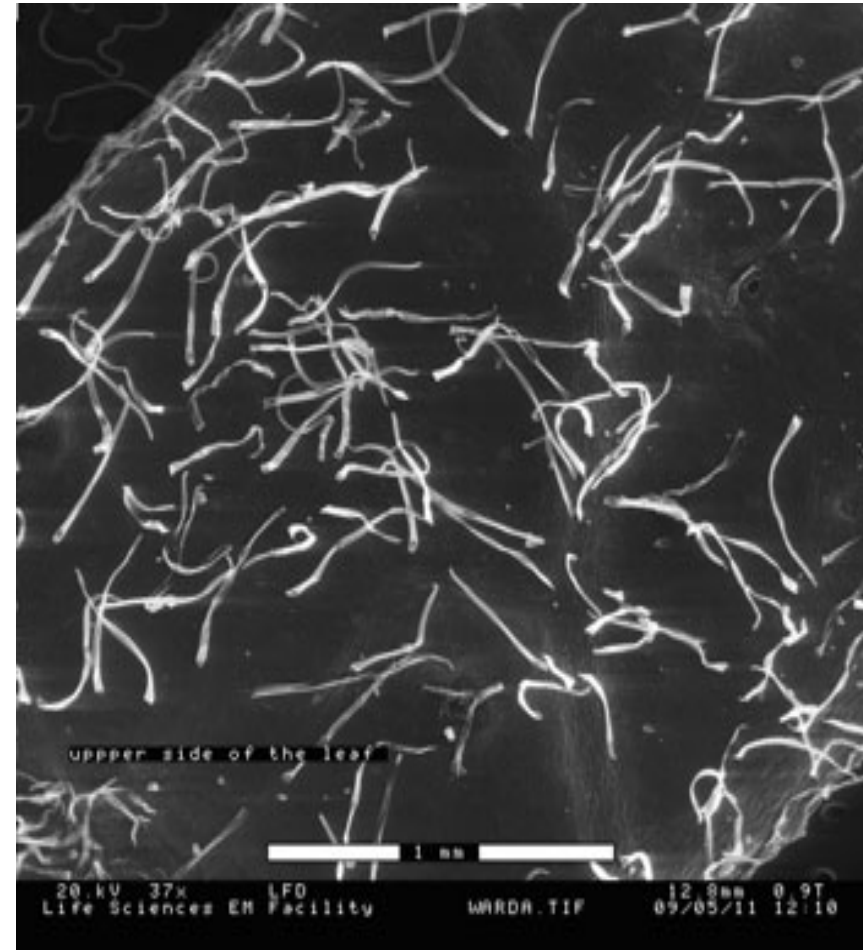
Scanning Electron Microscopy Images taken by Bio4XX3 students under the supervision of Klaus Schultes, Department of Biology, McMaster University. (Contrast, brightness and gamma in modified images were adjusted using Irfanview ver 4.23.)

Wardah Hannan

Ventral surface of the leaf



Original

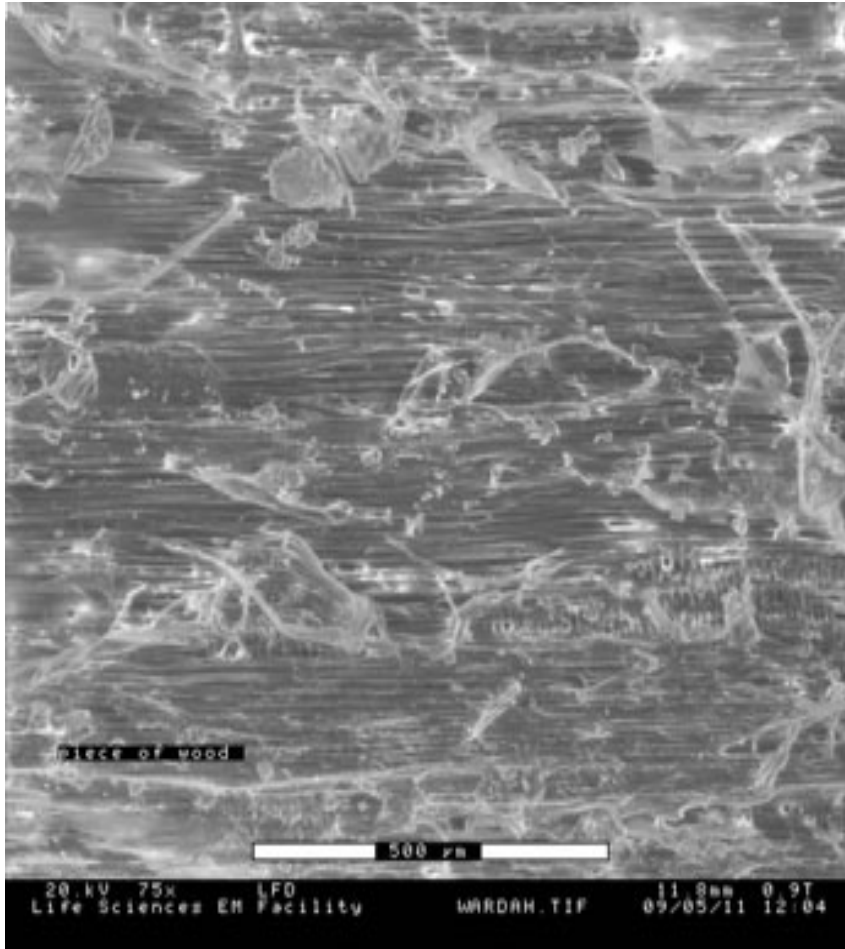


Modified

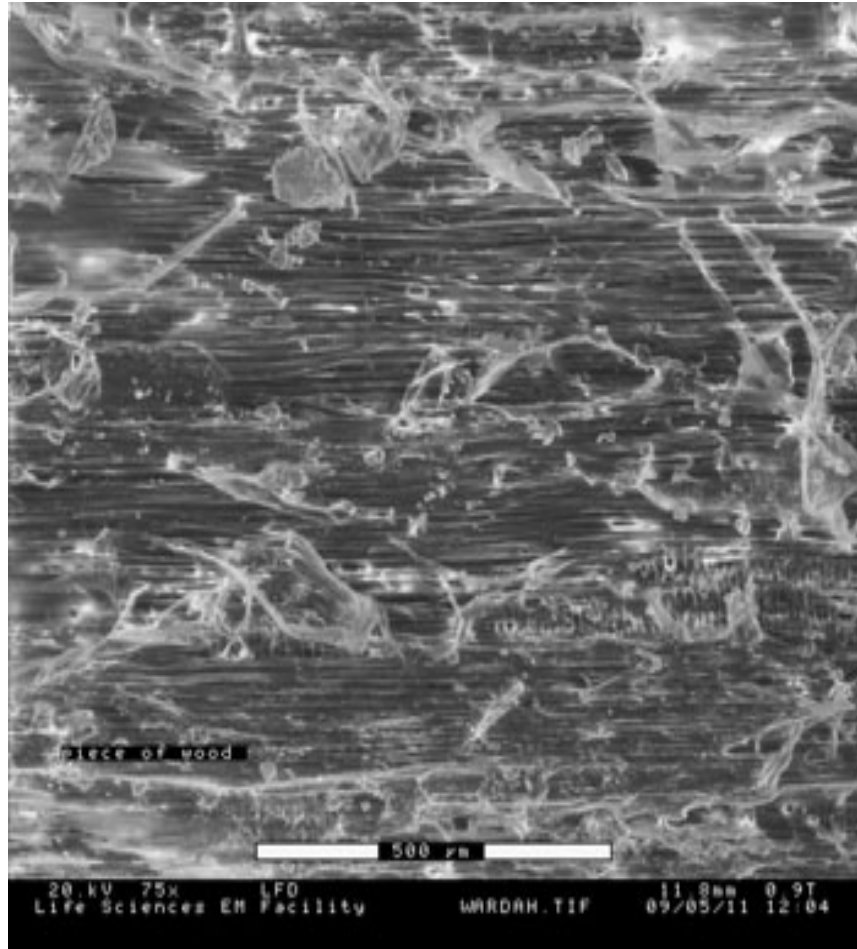
Scanning Electron Microscopy Images taken by Bio4XX3 students under the supervision of Klaus Schultes, Department of Biology, McMaster University. (Contrast, brightness and gamma in modified images were adjusted using Irfanview ver 4.23.)

Wardah Hannan

Piece of Wood



Original

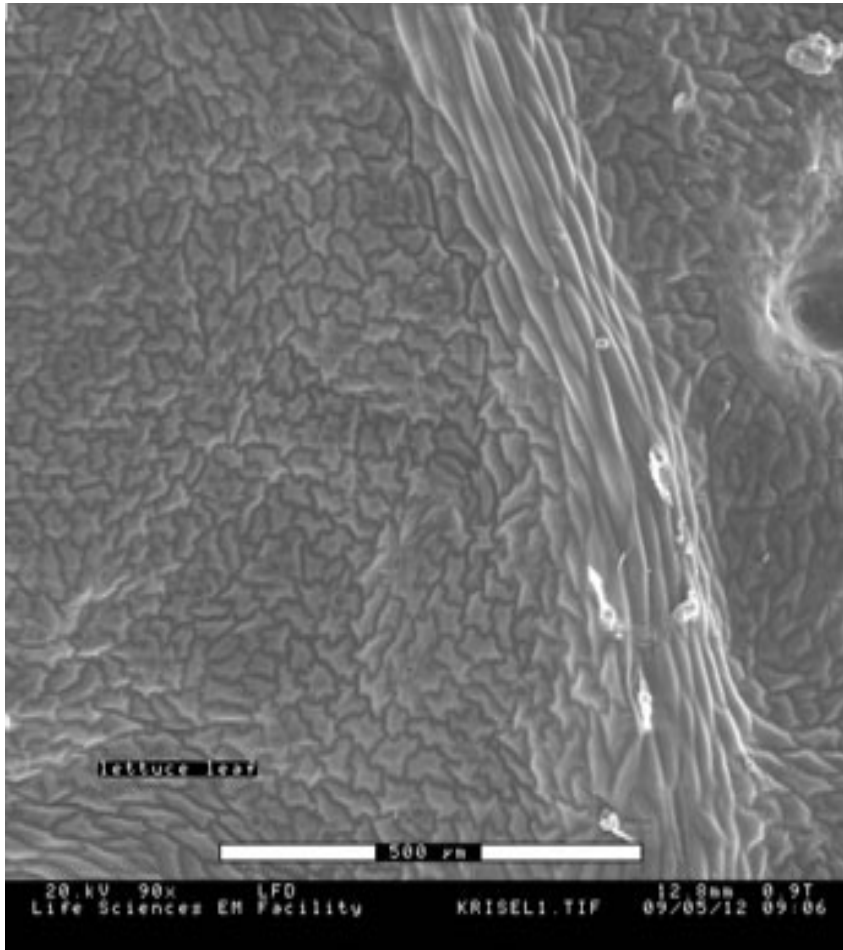


Modified

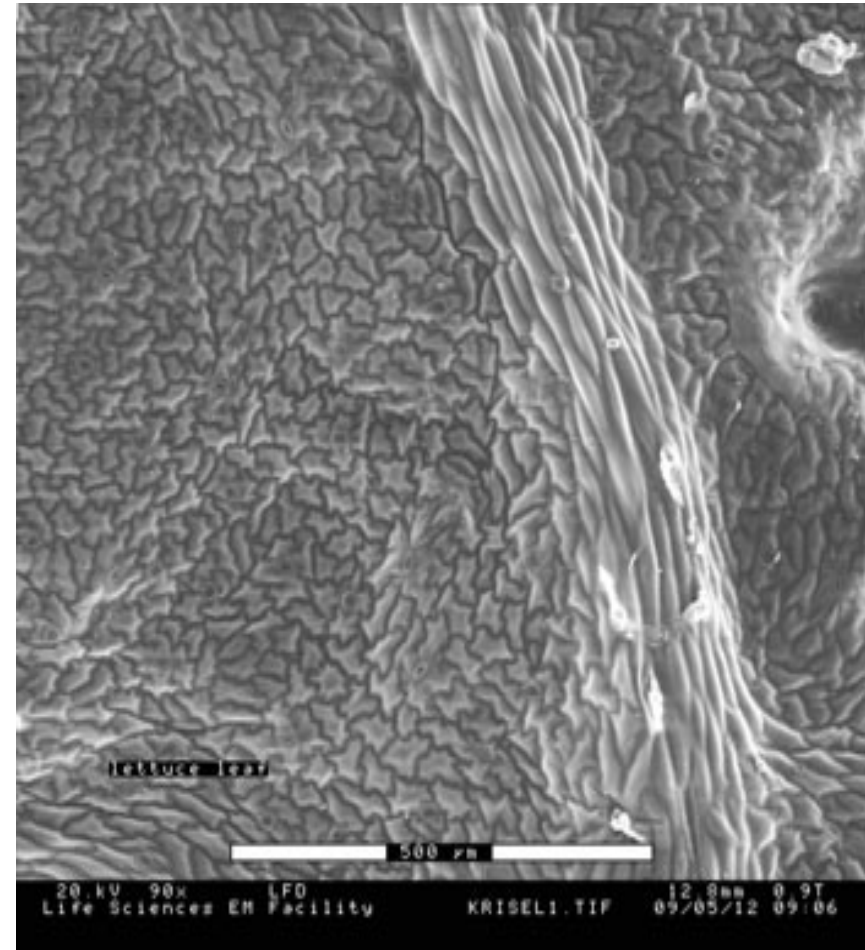
Scanning Electron Microscopy Images taken by Bio4XX3 students under the supervision of Klaus Schultes, Department of Biology, McMaster University. (Contrast, brightness and gamma in modified images were adjusted using Irfanview ver 4.23.)

Krisel Nagallo

Lettuce leaf



Original

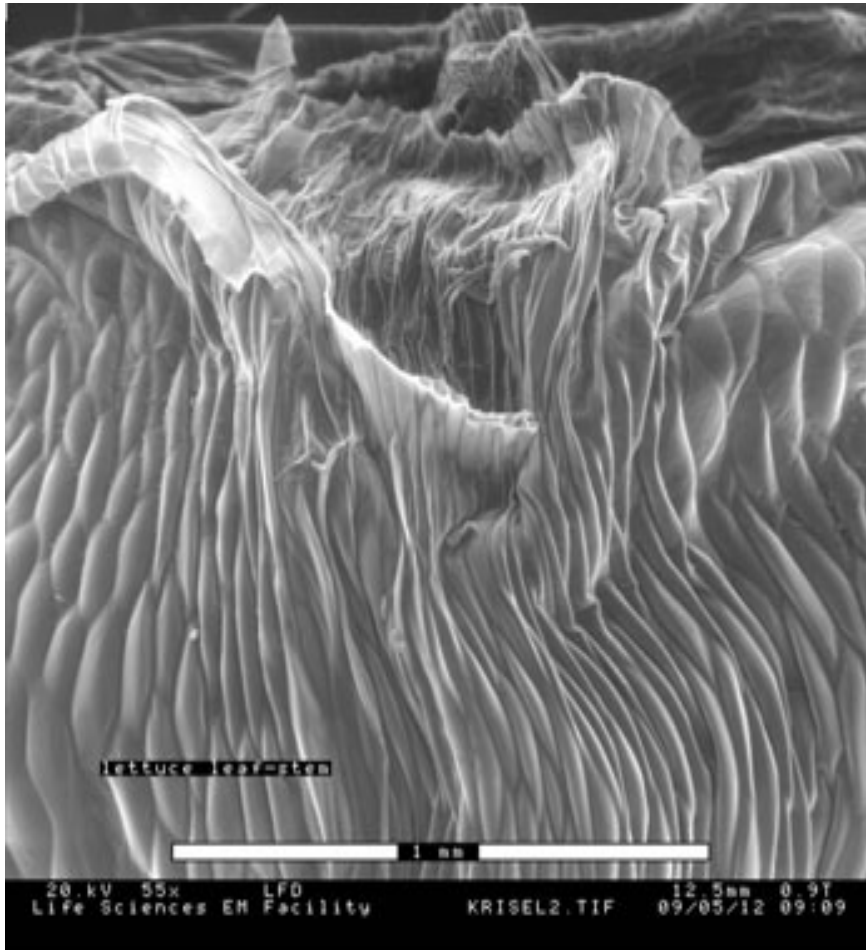


Modified

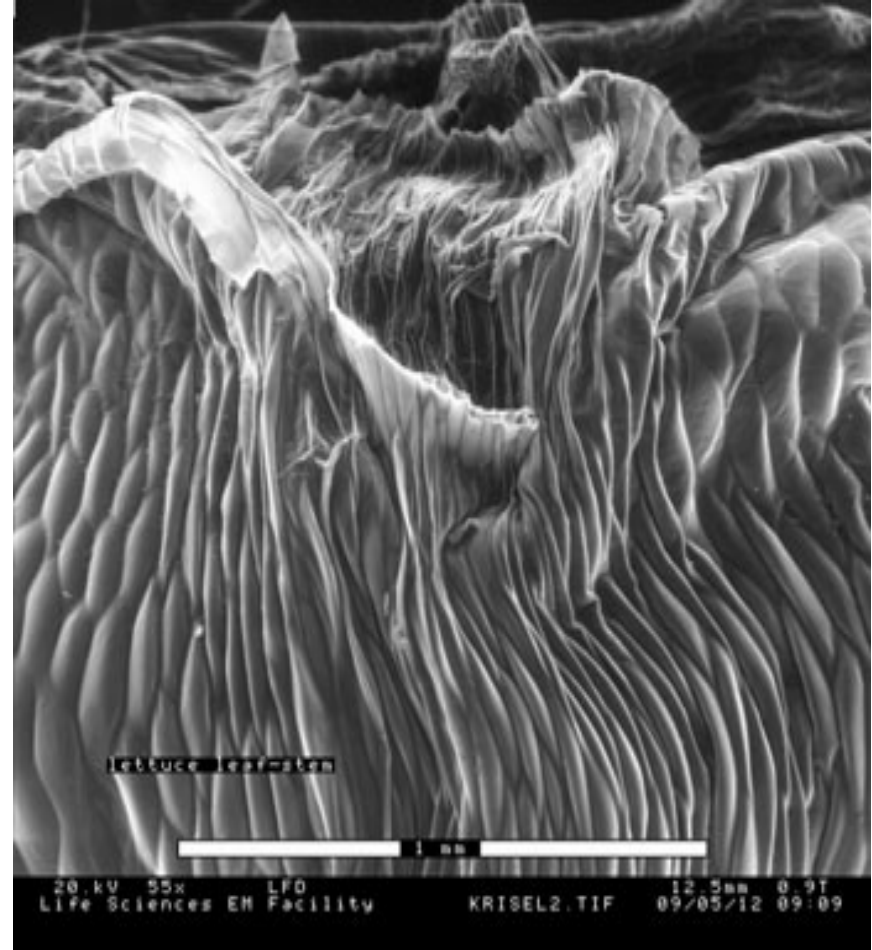
Scanning Electron Microscopy Images taken by Bio4XX3 students under the supervision of Klaus Schultes, Department of Biology, McMaster University. (Contrast, brightness and gamma in modified images were adjusted using Irfanview ver 4.23.)

Krisel Nagallo

Edge of a lettuce leaf stem



Original

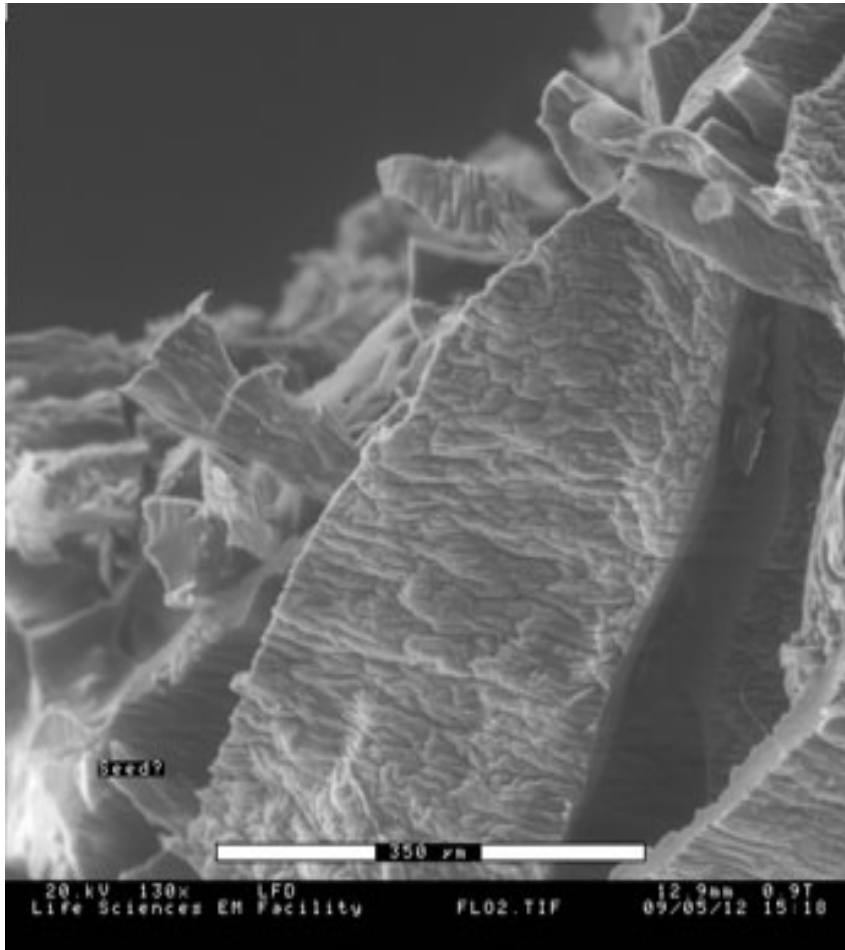


Modified

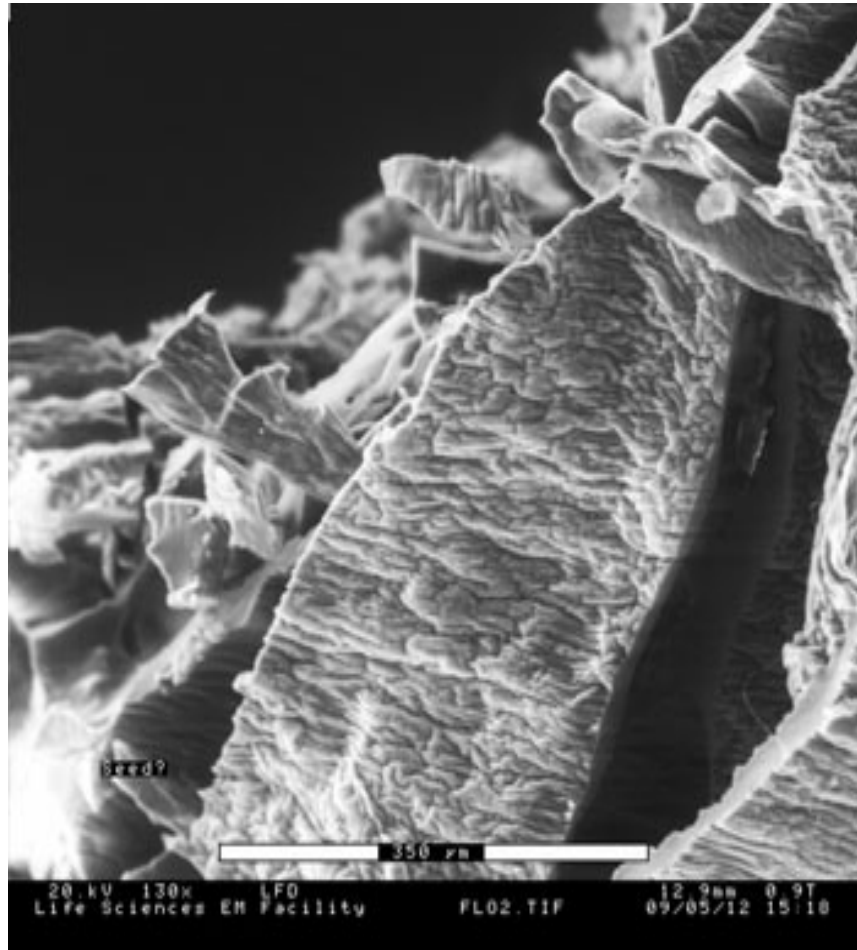
Scanning Electron Microscopy Images taken by Bio4XX3 students under the supervision of Klaus Schultes, Department of Biology, McMaster University. (Contrast, brightness and gamma in modified images were adjusted using Irfanview ver 4.23.)

Floriana

The inside of a seed



Original

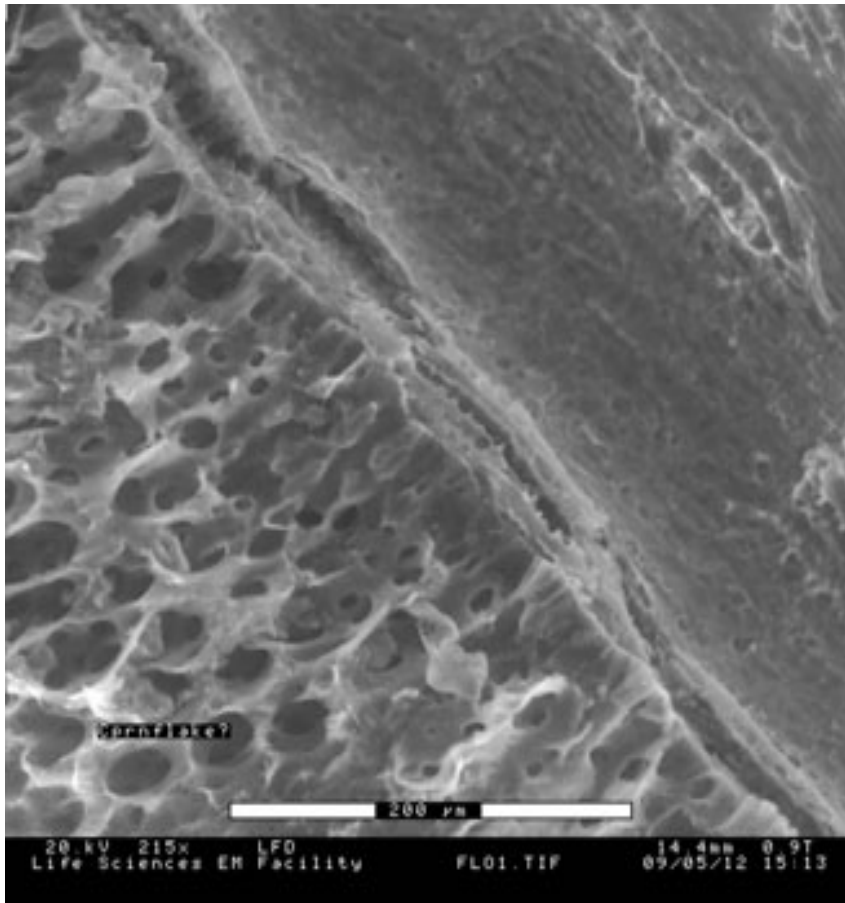


Modified

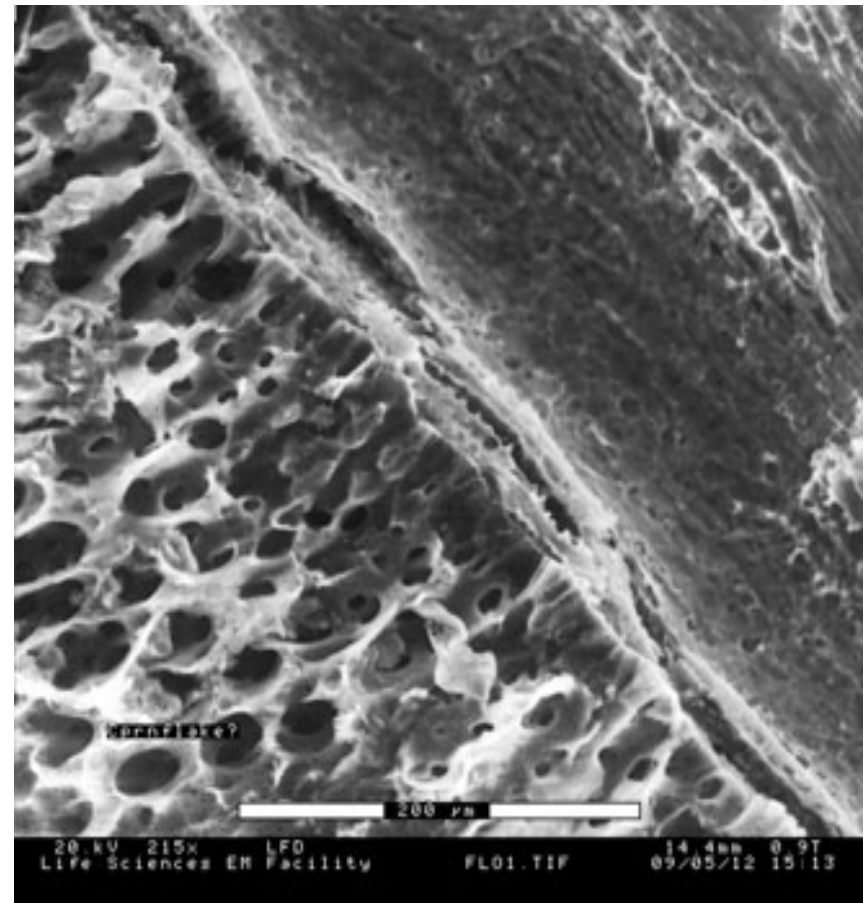
Scanning Electron Microscopy Images taken by Bio4XX3 students under the supervision of Klaus Schultes, Department of Biology, McMaster University. (Contrast, brightness and gamma in modified images were adjusted using Irfanview ver 4.23.)

Floriana

A piece of cereal



Original

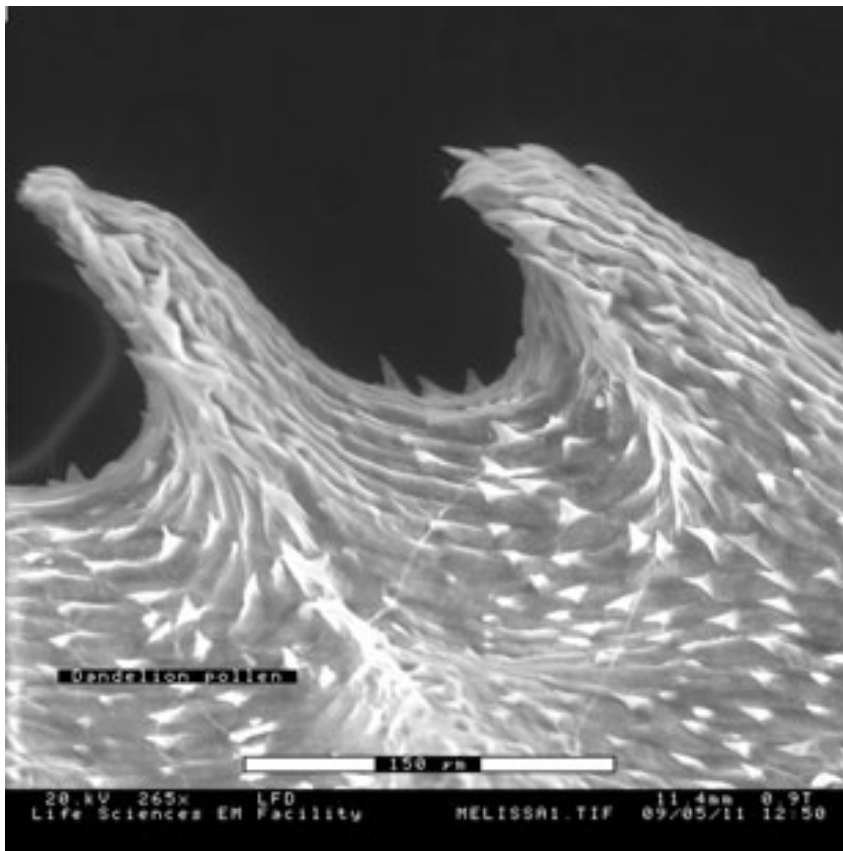


Modified

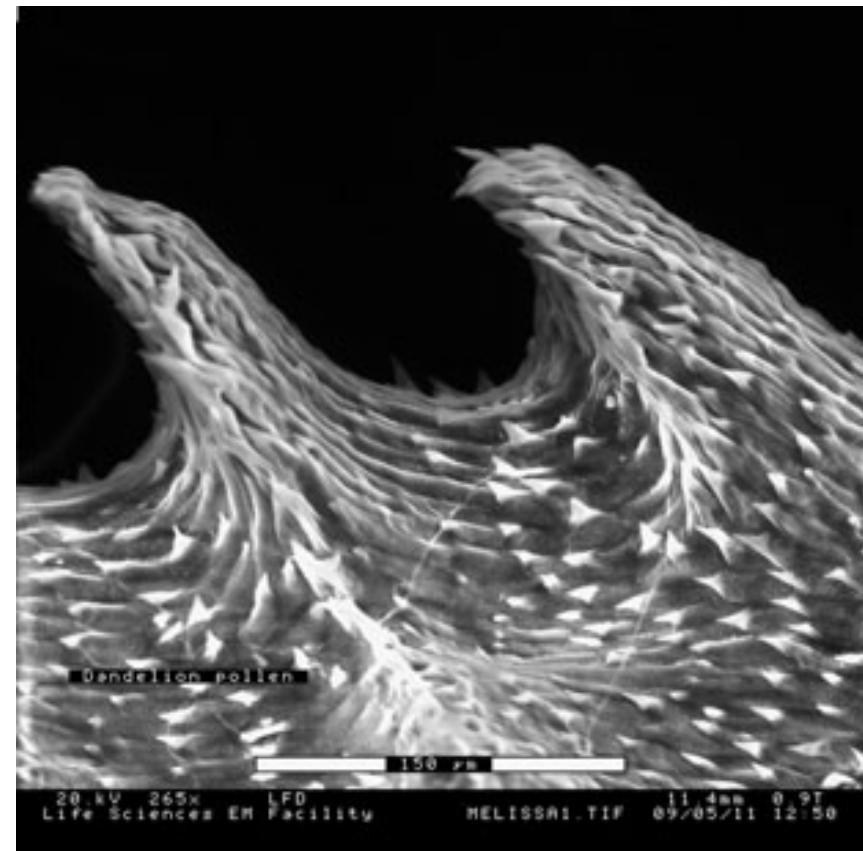
Scanning Electron Microscopy Images taken by Bio4XX3 students under the supervision of Klaus Schultes, Department of Biology, McMaster University. (Contrast, brightness and gamma in modified images were adjusted using Irfanview ver 4.23.)

Melissa Cunningham

Dandelion Pollen



Original

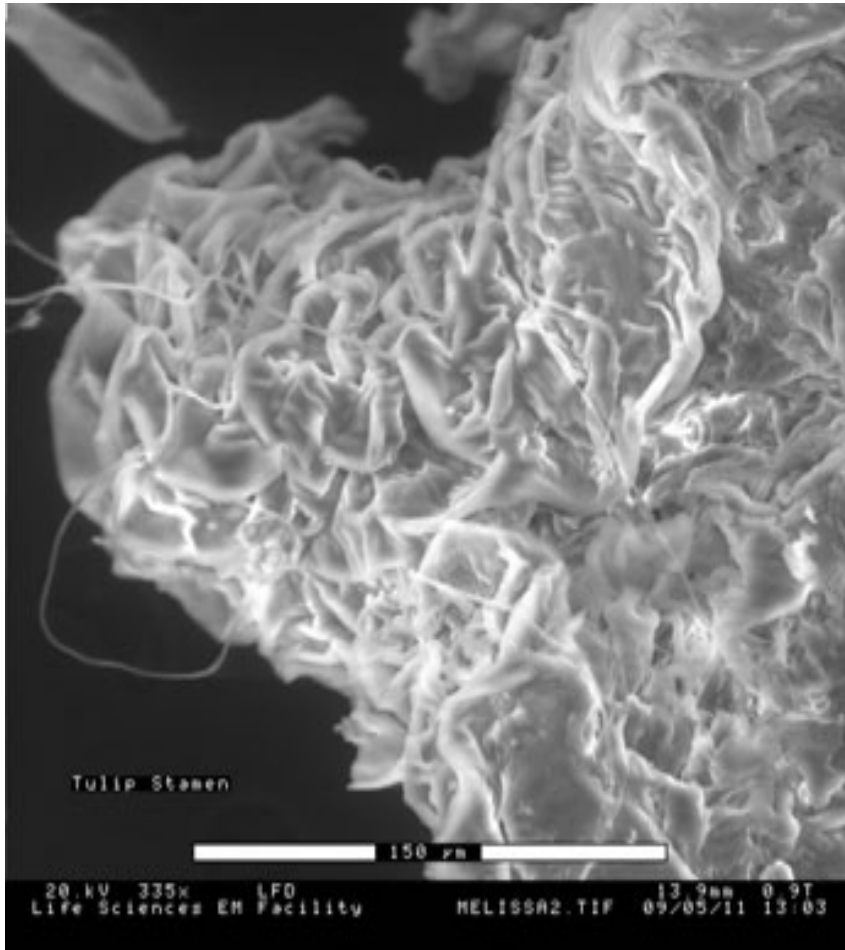


Modified

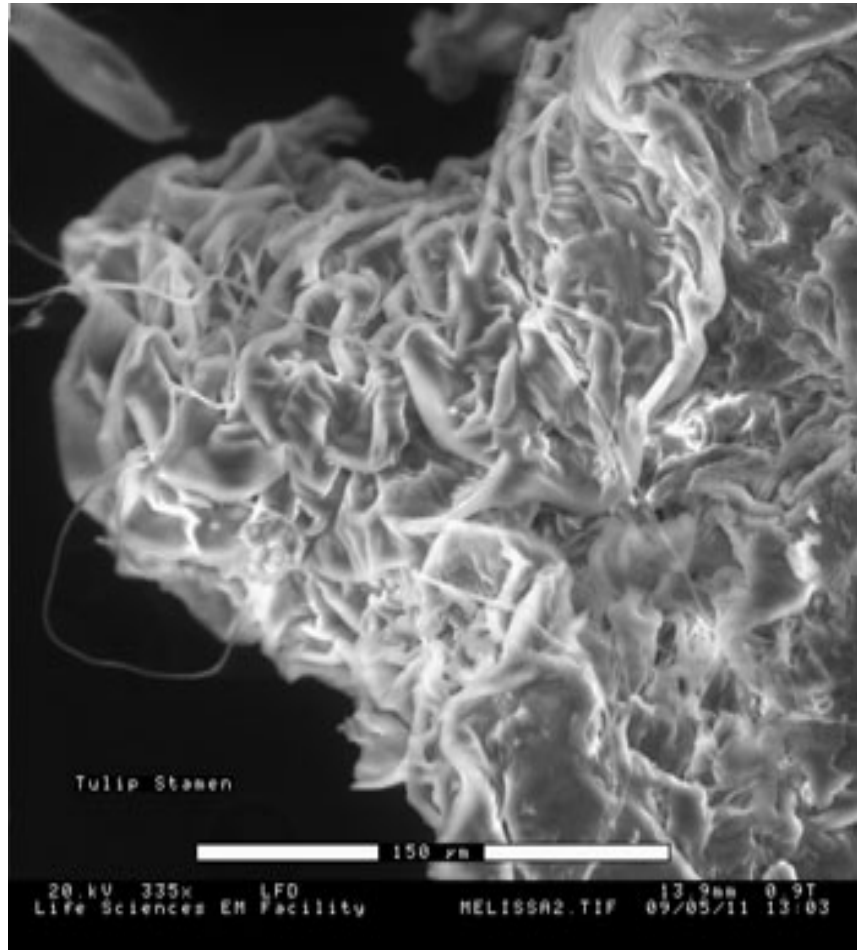
Scanning Electron Microscopy Images taken by Bio4XX3 students under the supervision of Klaus Schultes, Department of Biology, McMaster University. (Contrast, brightness and gamma in modified images were adjusted using Irfanview ver 4.23.)

Melissa Cunningham

Tulip Stamen



Original



Modified

Scanning Electron Microscopy Images taken by Bio4XX3 students under the supervision of Klaus Schultes, Department of Biology, McMaster University. (Contrast, brightness and gamma in modified images were adjusted using Irfanview ver 4.23.)

Nicole Vidinu

Fruit Fly



Original

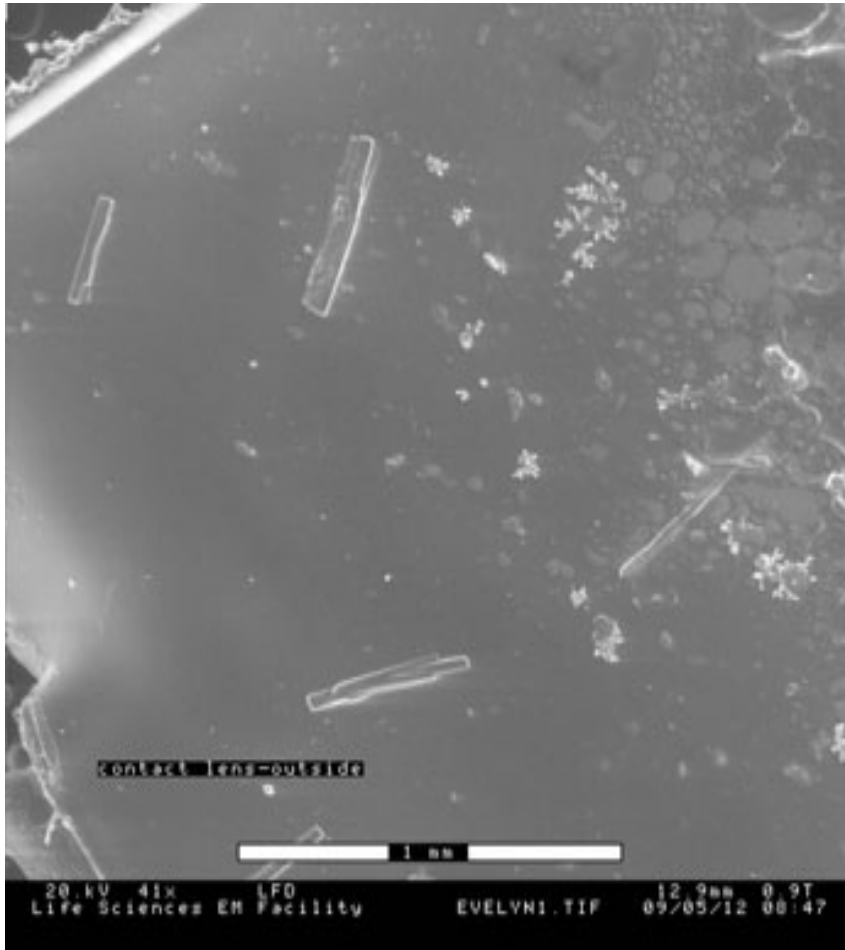


Modified

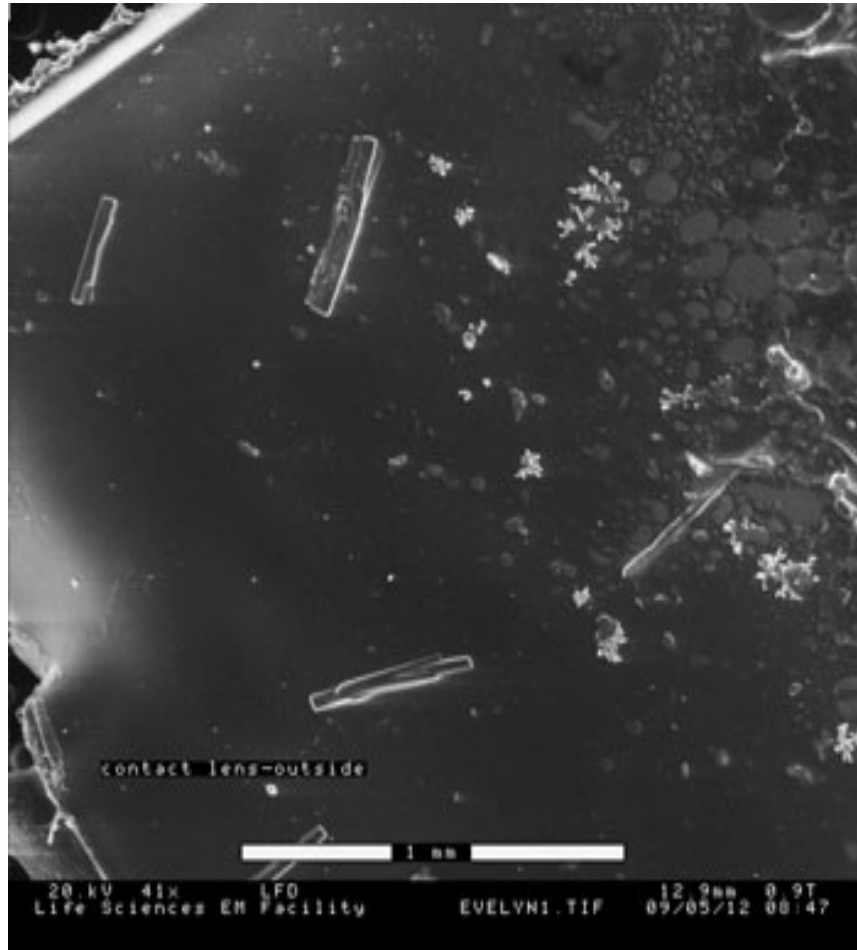
Scanning Electron Microscopy Images taken by Bio4XX3 students under the supervision of Klaus Schultes, Department of Biology, McMaster University. (Contrast, brightness and gamma in modified images were adjusted using Irfanview ver 4.23.)

Evelyn Miwa

Contact Lens-outside



Original

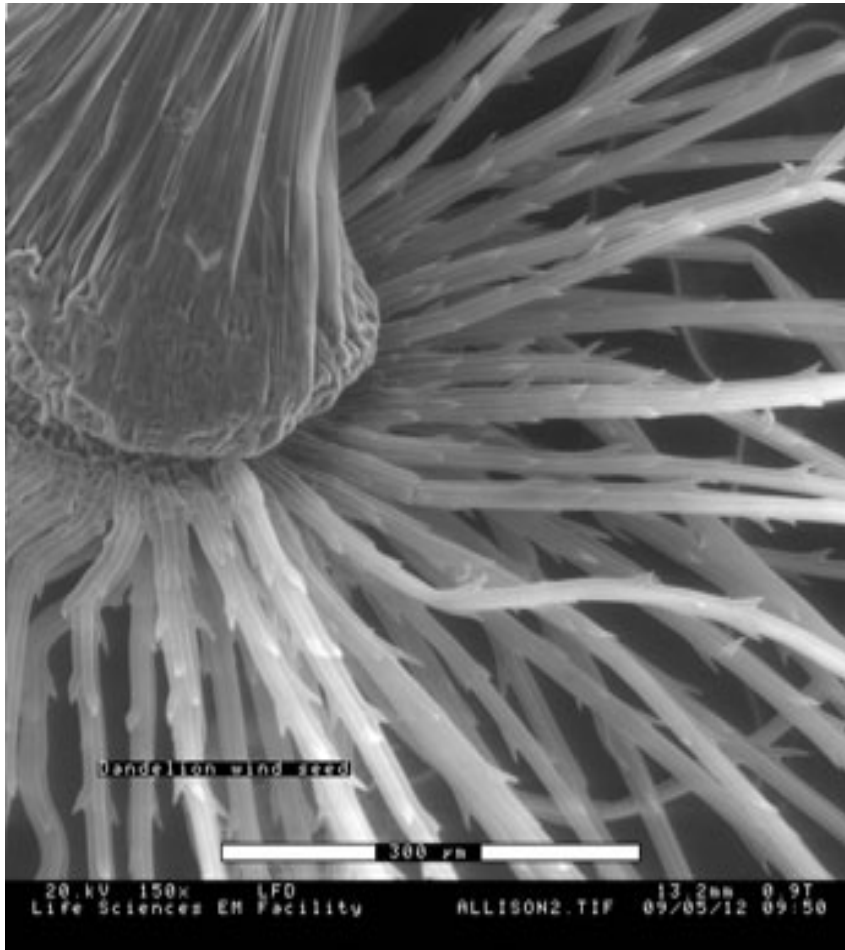


Modified

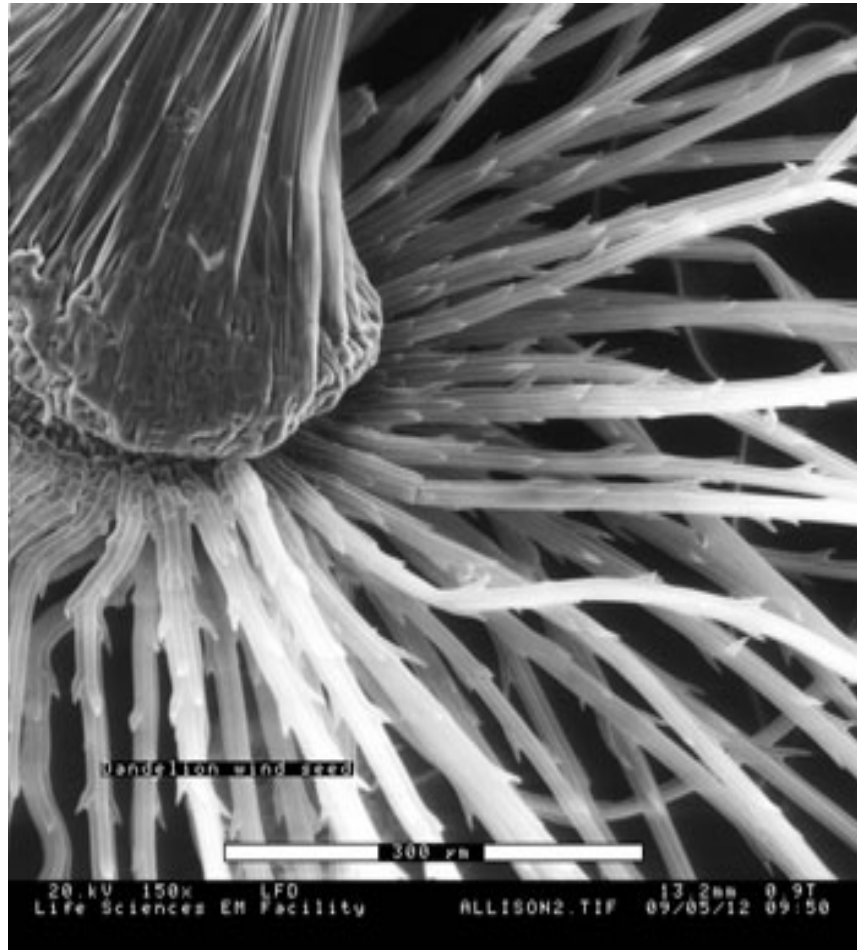
Scanning Electron Microscopy Images taken by Bio4XX3 students under the supervision of Klaus Schultes, Department of Biology, McMaster University. (Contrast, brightness and gamma in modified images were adjusted using Irfanview ver 4.23.)

Allison Nixon

Dandelion flying seed



Original

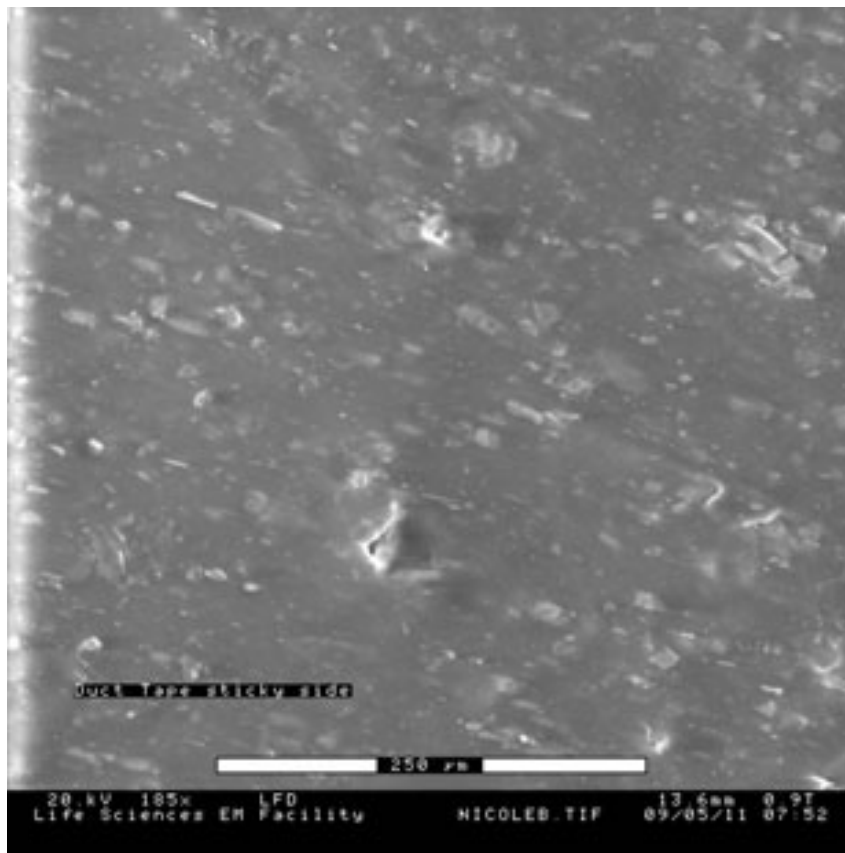


Modified

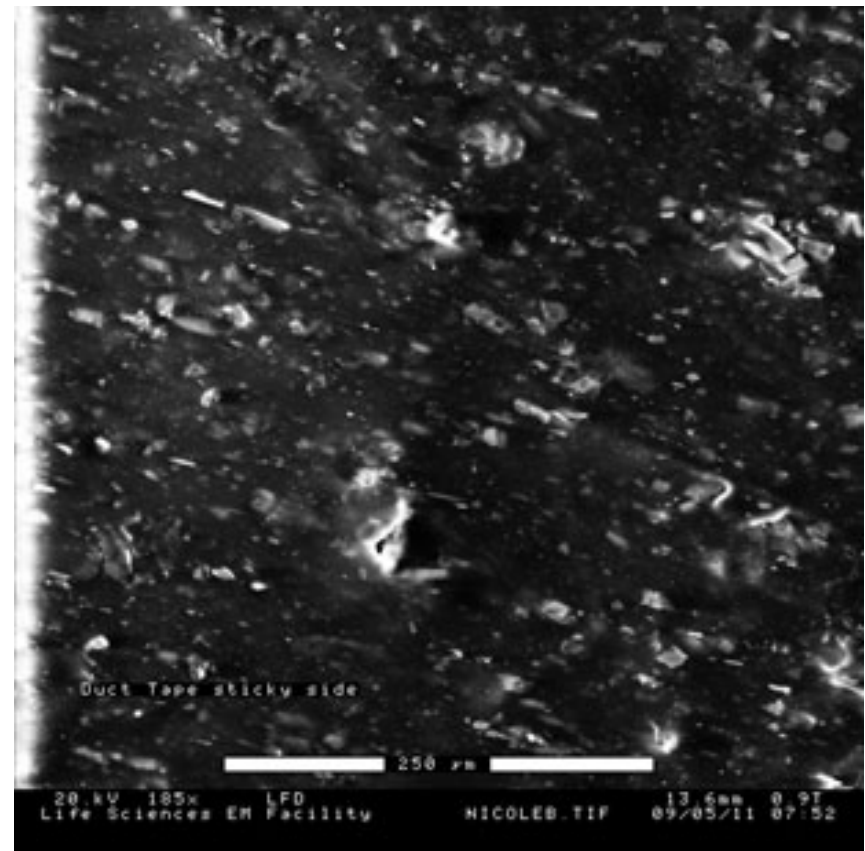
Scanning Electron Microscopy Images taken by Bio4XX3 students under the supervision of Klaus Schultes, Department of Biology, McMaster University. (Contrast, brightness and gamma in modified images were adjusted using Irfanview ver 4.23.)

Nicole Batenburg

Duct Tape – sticky side



Original

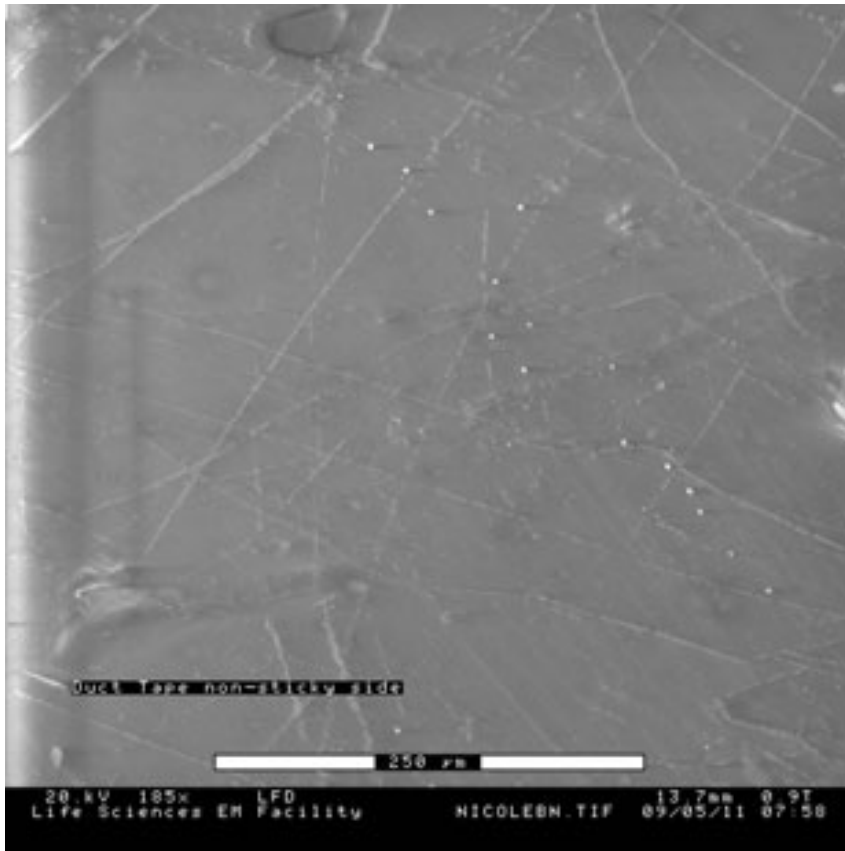


Modified

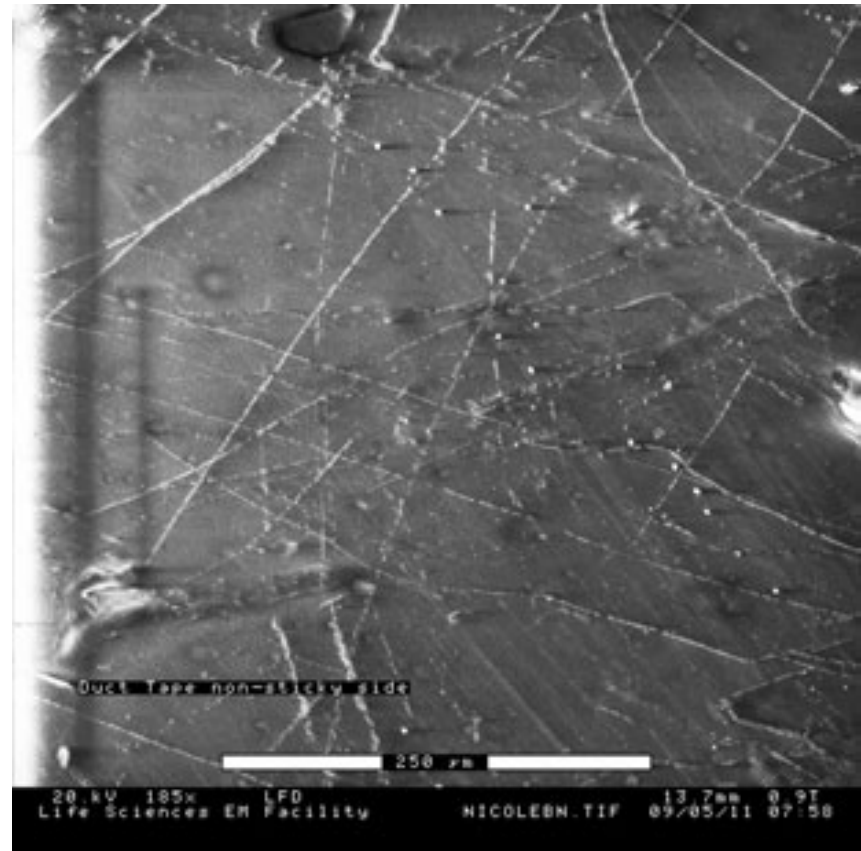
Scanning Electron Microscopy Images taken by Bio4XX3 students under the supervision of Klaus Schultes, Department of Biology, McMaster University. (Contrast, brightness and gamma in modified images were adjusted using Irfanview ver 4.23.)

Nicole Batenburg

Non-Sticky side?



Original

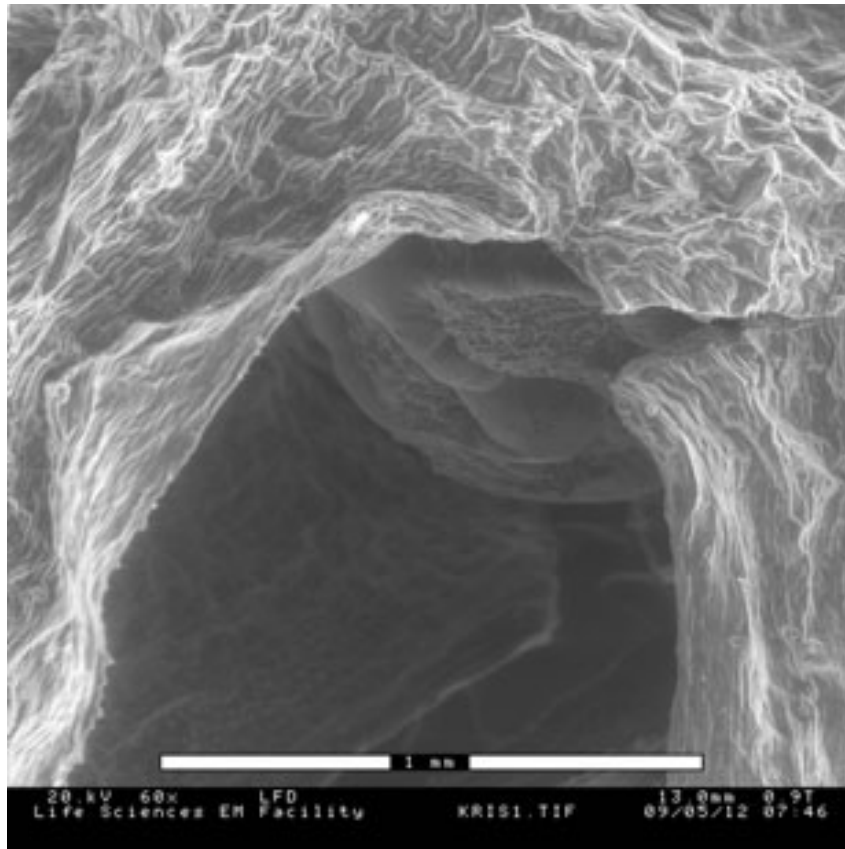


Modified

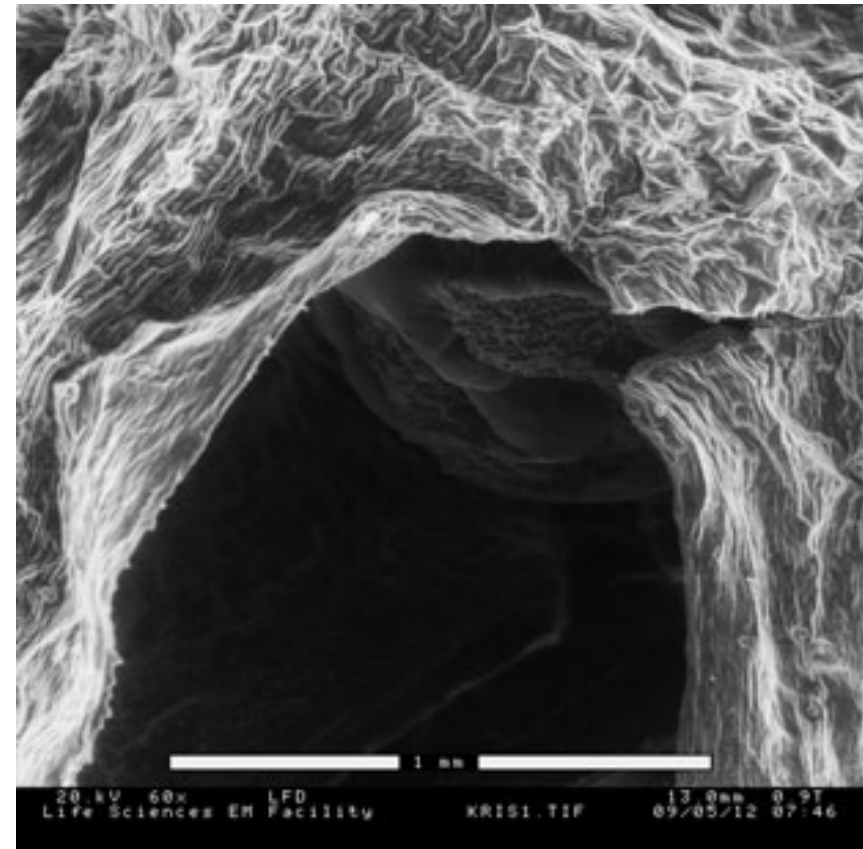
Scanning Electron Microscopy Images taken by Bio4XX3 students under the supervision of Klaus Schultes, Department of Biology, McMaster University. (Contrast, brightness and gamma in modified images were adjusted using Irfanview ver 4.23.)

Kristen Marijan

Sepal base (view into interior, flower removed)



Original

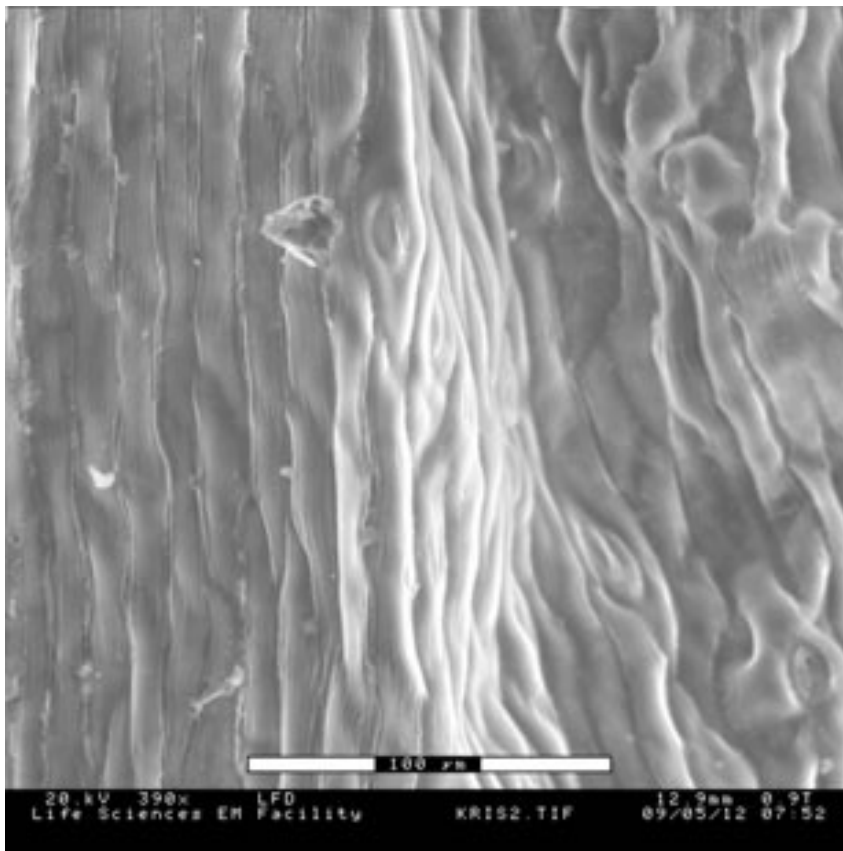


Modified

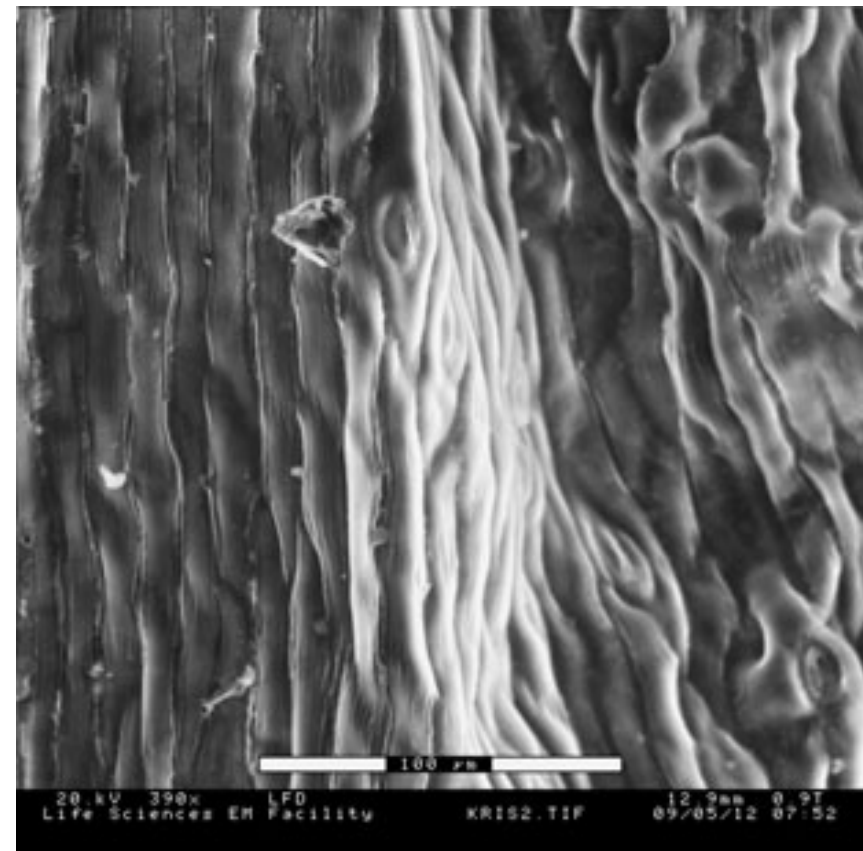
Scanning Electron Microscopy Images taken by Bio4XX3 students under the supervision of Klaus Schultes, Department of Biology, McMaster University. (Contrast, brightness and gamma in modified images were adjusted using Irfanview ver 4.23.)

Kristen Marijan

Sepal



Original

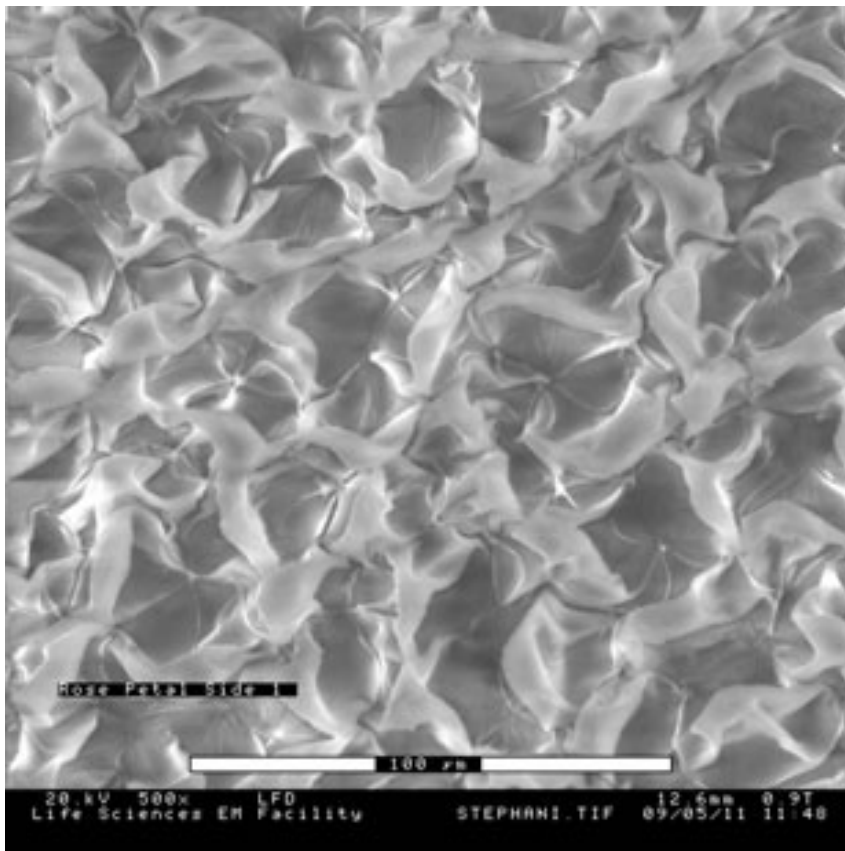


Modified

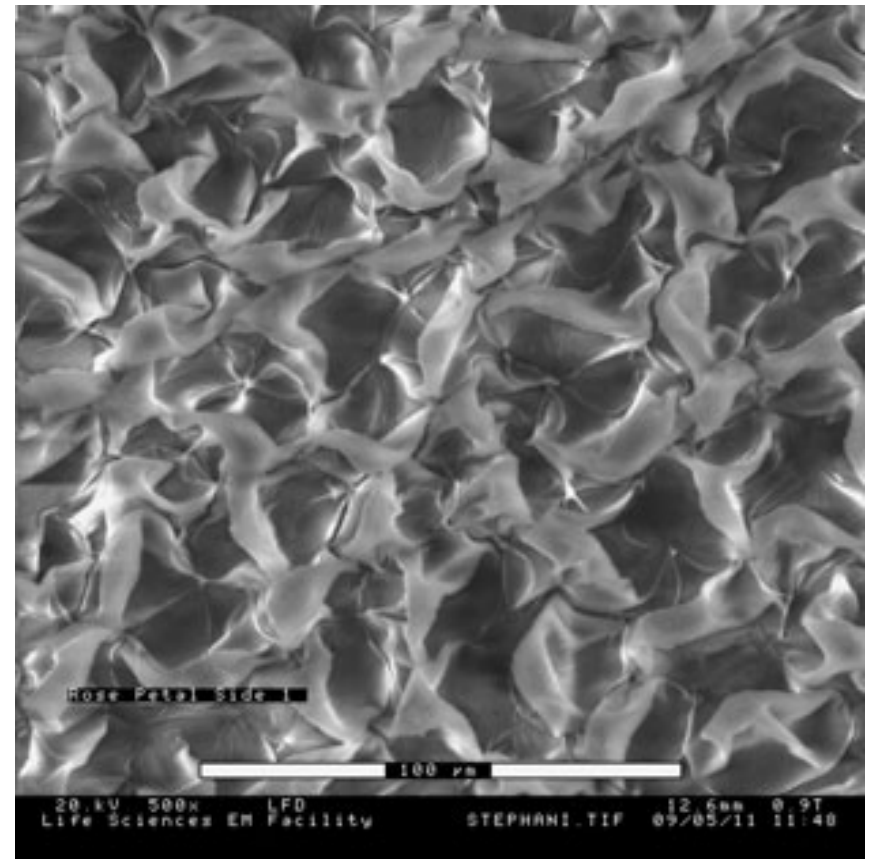
Scanning Electron Microscopy Images taken by Bio4XX3 students under the supervision of Klaus Schultes, Department of Biology, McMaster University. (Contrast, brightness and gamma in modified images were adjusted using Irfanview ver 4.23.)

Stephanie Greer

Rose petal



Original

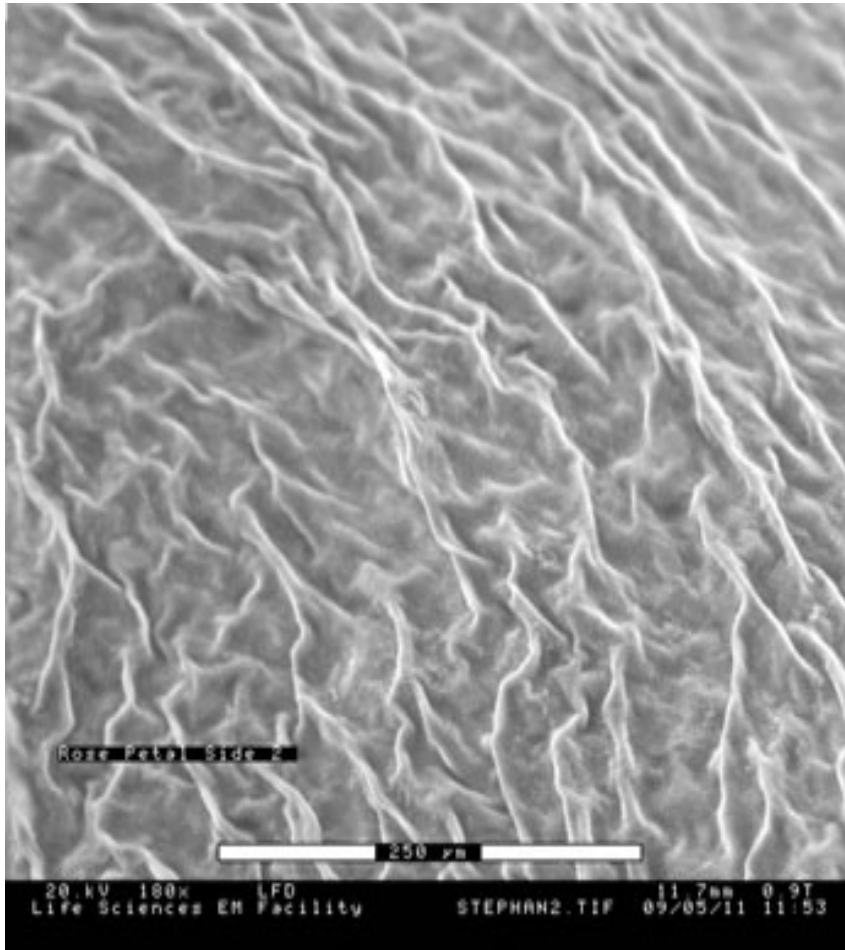


Modified

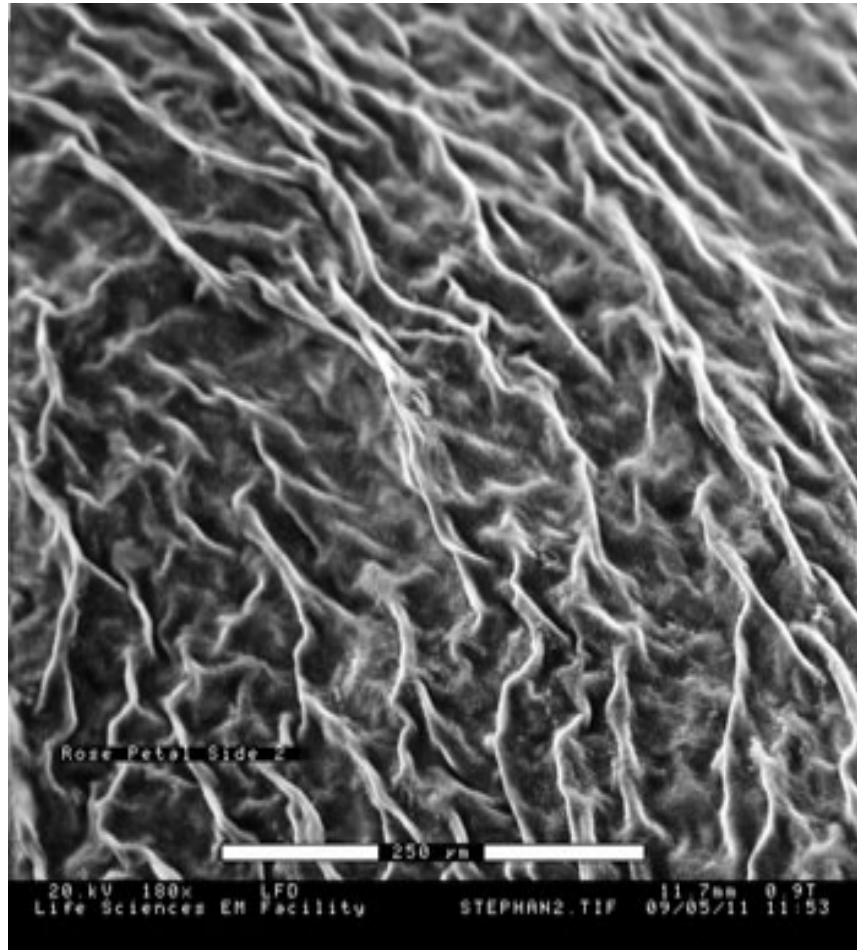
Scanning Electron Microscopy Images taken by Bio4XX3 students under the supervision of Klaus Schultes, Department of Biology, McMaster University. (Contrast, brightness and gamma in modified images were adjusted using Irfanview ver 4.23.)

Stephanie Greer

Rose petal



Original



Modified